

Valley Stream Valley Stream, New York	1 Mile Radius	3 Mile Radius	5 Mile Radius	10 Minute Drive
--	---------------	---------------	---------------	-----------------

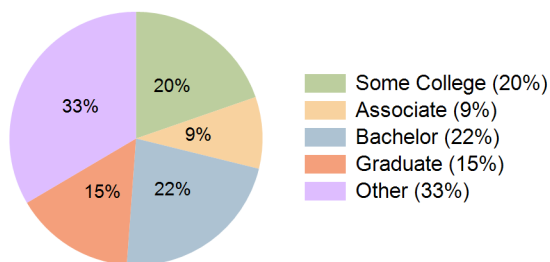
### Current Year Demographics

Current Population	32,657	283,409	729,333	293,640
Total Daytime Pop	32,731	213,360	599,653	217,696
Workplace Pop	15,605	71,751	206,031	71,959
Average Household Income	\$124,796	\$135,359	\$126,969	\$131,060
Median Household Income	\$109,951	\$111,525	\$100,269	\$108,920
Total Households	10,639	92,708	235,832	96,246
Median Home Value	\$624,366	\$635,524	\$643,196	\$628,151
Bachelors Degree	24.8%	22.7%	21.5%	22.3%
Graduate Degree	15.6%	16.1%	15.1%	15.4%
Total Consumer Spending/Capita (Weekly)	\$529	\$531	\$524	\$529

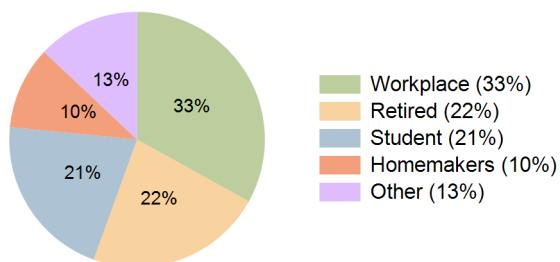
### 2027 Demographic Projections

Projected Population	33,062	282,663	728,272	294,230
Projected 5 Year Annual Growth Rate (Pop)	0.2%	-0.1%	0.0%	0.0%
Projected Households	10,771	92,499	235,542	96,472
Projected 5 Year Annual Growth Rate (HH)	0.2%	0.0%	0.0%	0.0%

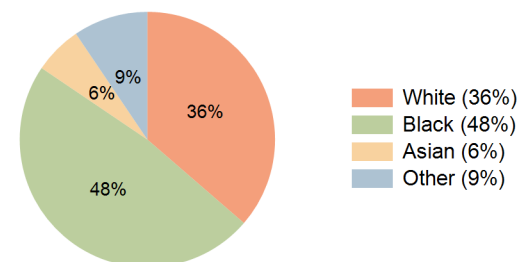
Education (10 Minute Drive)



Daytime Population (10 Minute Drive)



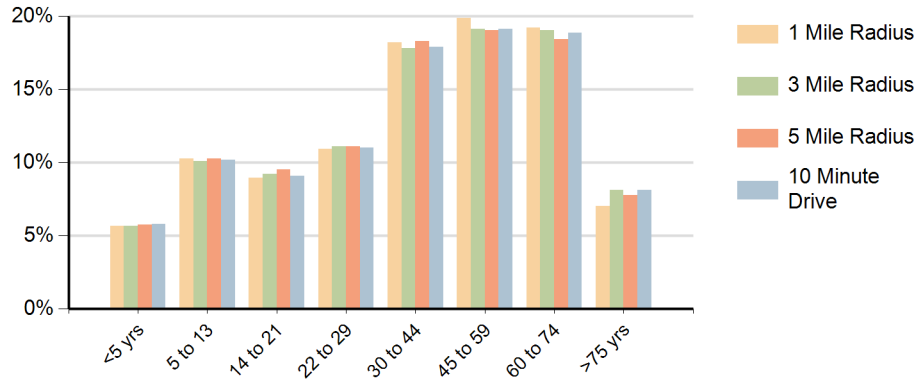
Race (10 Minute Drive)



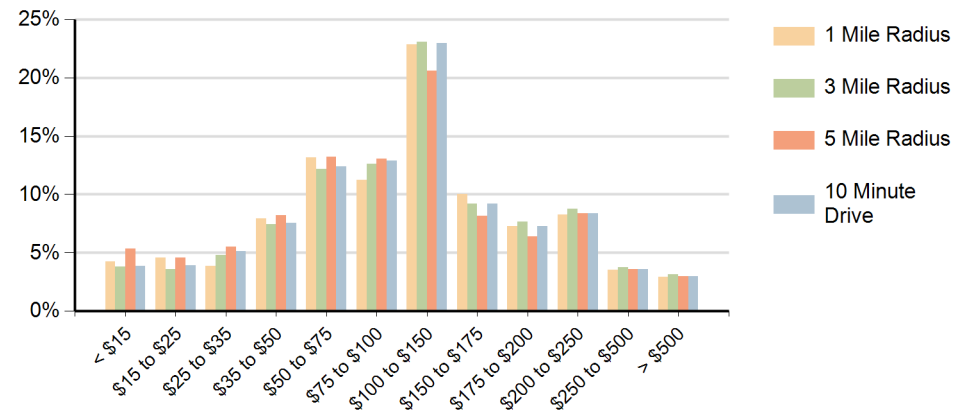
#### Hispanic Ethnicity

13% Hispanic | 87% Non Hispanic

### Population by Age Range



### Households by Income Range (\$000)



Valley Stream Valley Stream, New York		1 Mile Radius	3 Mile Radius	5 Mile Radius	10 Minute Drive
Population	Current Estimated Population	32,657	283,409	729,333	293,640
	2010 Census Population	30,422	275,227	713,917	283,420
	2000 Census Population	29,093	278,226	720,489	286,898
	Historical Annual Growth 2000 to 2010	0.4%	-0.1%	-0.1%	-0.1%
	Estimated Annual Growth 2010 to 2022	0.6%	0.2%	0.2%	0.3%
	Projected Annual Growth 2022 to 2027	0.2%	-0.1%	0.0%	0.0%
Households	Current Estimated Households	10,639	92,708	235,832	96,246
	2010 Census Households	9,906	89,910	231,282	92,974
	2000 Census Households	10,080	91,853	234,641	94,638
	Historical Annual Growth 2000 to 2010	-0.2%	-0.2%	-0.1%	-0.2%
	Estimated Annual Growth 2010 to 2022	0.6%	0.3%	0.2%	0.3%
	Projected Annual Growth 2022 to 2027	0.2%	0.0%	0.0%	0.0%
	Population per Household	3.1	3.0	3.1	3.0
Ethnic	Hispanic or Latino Population	23%	13%	14%	13%
	Non Hispanic or Latino Population	77%	87%	86%	87%
Race	White	44.4%	39.9%	38.3%	36.3%
	Black or African American	23.6%	43.8%	41.2%	48.1%
	Asian & Pacific Islander	15.3%	6.7%	8.7%	6.1%
	Other Races	16.8%	9.6%	11.7%	9.5%