

Blakeney Town Center
Charlotte, North Carolina

1 Mile Radius

3 Mile Radius

5 Mile Radius

10 Minute Drive

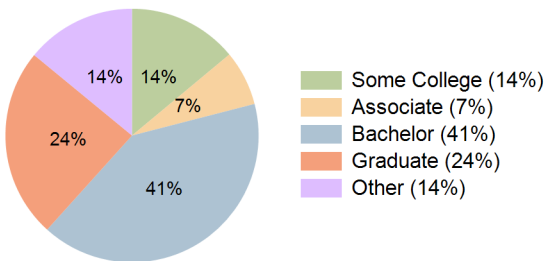
Current Year Demographics

Current Population	12,372	75,241	165,913	70,963
Total Daytime Pop	10,922	65,946	137,002	65,674
Workplace Pop	4,002	22,233	48,099	21,818
Average Household Income	\$156,480	\$171,825	\$157,257	\$163,273
Median Household Income	\$114,194	\$126,310	\$114,482	\$121,997
Total Households	4,746	27,552	62,785	26,403
Median Home Value	\$516,057	\$613,054	\$552,619	\$587,818
Bachelors Degree	40.8%	41.1%	38.4%	40.7%
Graduate Degree	24.7%	24.7%	23.3%	24.3%
Total Consumer Spending/Capita (Weekly)	\$377	\$381	\$376	\$379

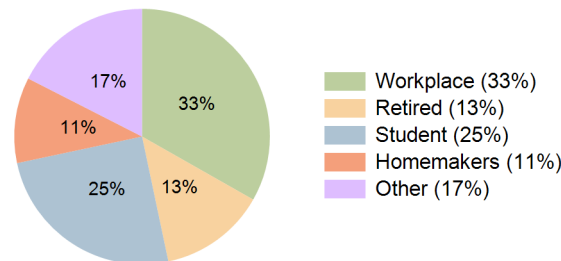
2027 Demographic Projections

Projected Population	12,906	80,140	177,666	75,768
Projected 5 Year Annual Growth Rate (Pop)	0.8%	1.3%	1.4%	1.3%
Projected Households	4,947	29,255	66,967	28,120
Projected 5 Year Annual Growth Rate (HH)	0.8%	1.2%	1.3%	1.3%

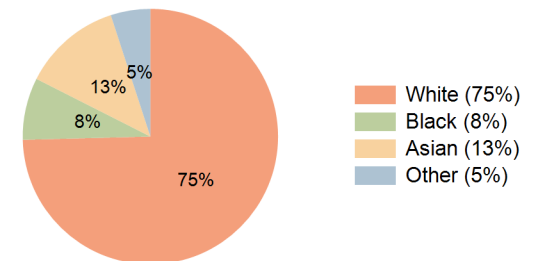
Education (10 Minute Drive)



Daytime Population (10 Minute Drive)

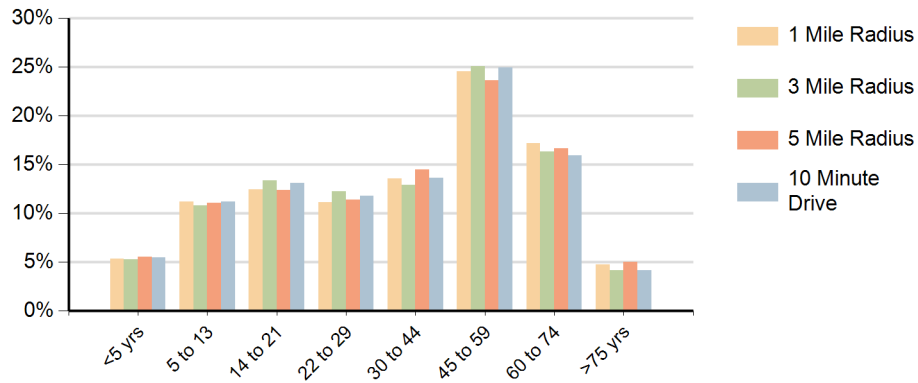


Race (10 Minute Drive)

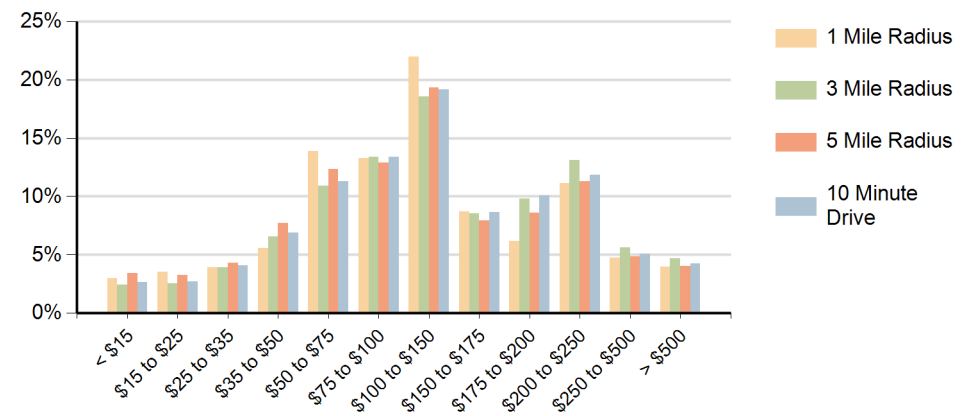


Hispanic Ethnicity
6% Hispanic | 94% Non Hispanic

Population by Age Range



Households by Income Range (\$000)



Blakeney Town Center Charlotte, North Carolina		1 Mile Radius	3 Mile Radius	5 Mile Radius	10 Minute Drive
Population	Current Estimated Population	12,372	75,241	165,913	70,963
	2010 Census Population	10,369	59,490	129,090	55,321
	2000 Census Population	5,034	29,411	77,587	26,947
	Historical Annual Growth 2000 to 2010	7.5%	7.3%	5.2%	7.5%
	Estimated Annual Growth 2010 to 2022	1.5%	1.9%	2.1%	2.1%
	Projected Annual Growth 2022 to 2027	0.8%	1.3%	1.4%	1.3%
Households	Current Estimated Households	4,746	27,552	62,785	26,403
	2010 Census Households	3,984	21,930	49,324	20,692
	2000 Census Households	1,678	10,300	29,029	9,529
	Historical Annual Growth 2000 to 2010	9.0%	7.8%	5.4%	8.1%
	Estimated Annual Growth 2010 to 2022	1.4%	1.9%	2.0%	2.0%
	Projected Annual Growth 2022 to 2027	0.8%	1.2%	1.3%	1.3%
	Population per Household	2.6	2.7	2.6	2.7
Ethnic	Hispanic or Latino Population	7%	6%	7%	6%
	Non Hispanic or Latino Population	93%	94%	93%	94%
Race	White	76.8%	75.3%	76.7%	74.6%
	Black or African American	6.3%	7.6%	8.4%	7.9%
	Asian & Pacific Islander	12.2%	12.3%	9.3%	12.5%
	Other Races	4.7%	4.8%	5.6%	5.0%