

**Circle Marina Center**  
Long Beach, California

**1 Mile Radius**

**3 Mile Radius**

**5 Mile Radius**

**10 Minute Drive**

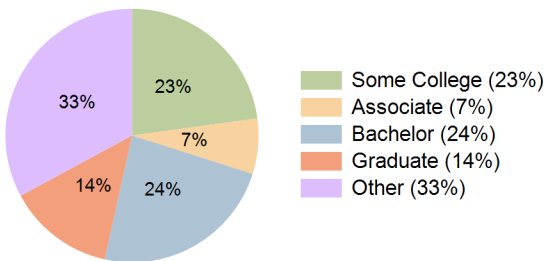
### Current Year Demographics

Current Population	33,596	236,950	477,857	288,445
Total Daytime Pop	36,853	251,440	546,612	338,422
Workplace Pop	10,707	76,410	190,624	101,162
Average Household Income	\$96,474	\$100,878	\$103,439	\$103,638
Median Household Income	\$75,497	\$75,411	\$78,159	\$77,261
Total Households	13,982	92,833	179,932	110,831
Median Home Value	\$916,449	\$918,989	\$875,086	\$911,865
Bachelors Degree	28.9%	24.0%	23.2%	23.6%
Graduate Degree	14.6%	13.8%	12.8%	13.7%
Total Consumer Spending/Capita (Weekly)	\$391	\$391	\$395	\$394

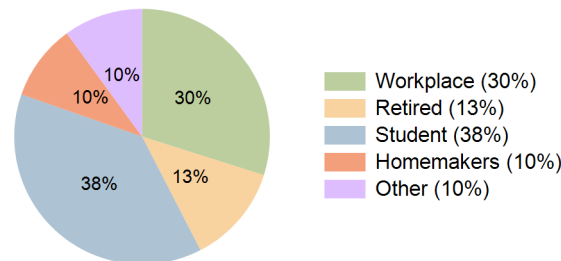
### 2027 Demographic Projections

Projected Population	33,742	239,914	483,036	291,484
Projected 5 Year Annual Growth Rate (Pop)	0.1%	0.2%	0.2%	0.2%
Projected Households	14,046	93,999	181,886	111,905
Projected 5 Year Annual Growth Rate (HH)	0.1%	0.3%	0.2%	0.2%

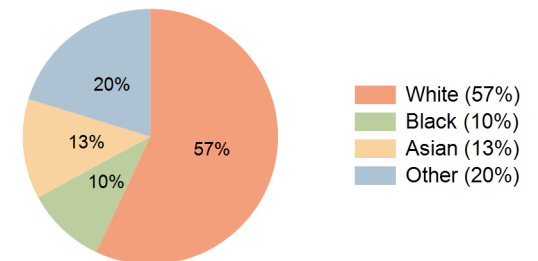
**Education (10 Minute Drive)**



**Daytime Population (10 Minute Drive)**

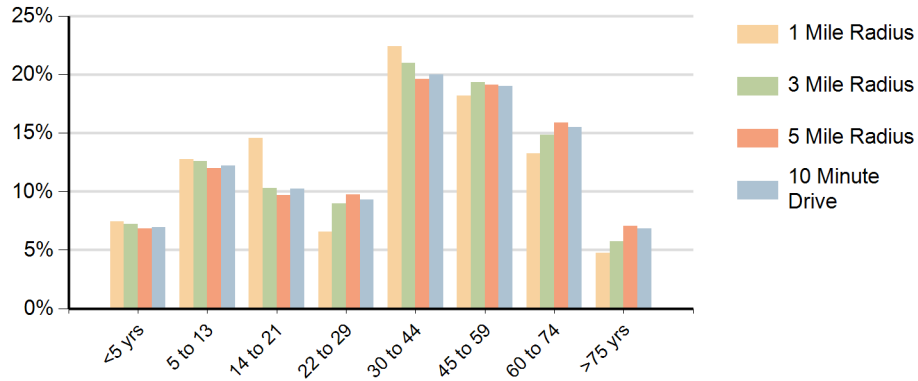


**Race (10 Minute Drive)**

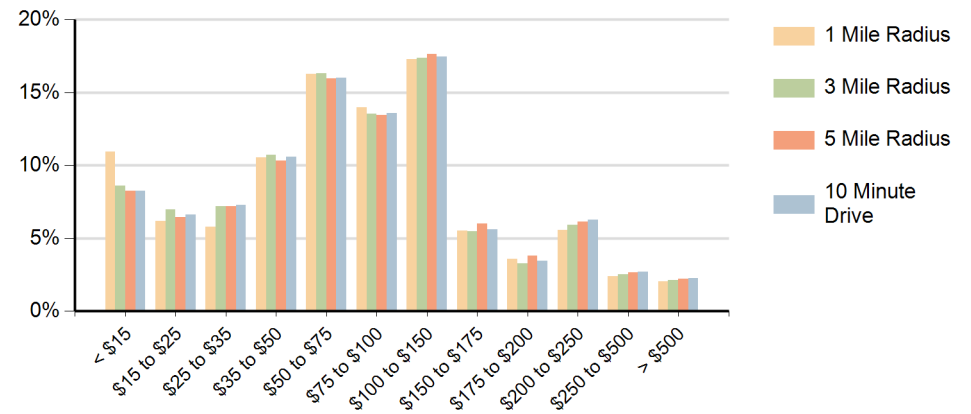


**Hispanic Ethnicity**  
35% Hispanic | 65% Non Hispanic

### Population by Age Range



### Households by Income Range (\$000)



Circle Marina Center Long Beach, California		1 Mile Radius	3 Mile Radius	5 Mile Radius	10 Minute Drive
Population	Current Estimated Population	33,596	236,950	477,857	288,445
	2010 Census Population	34,612	239,594	484,052	292,383
	2000 Census Population	34,047	241,131	483,824	294,493
	Historical Annual Growth 2000 to 2010	0.2%	-0.1%	0.0%	-0.1%
	Estimated Annual Growth 2010 to 2022	-0.2%	-0.1%	-0.1%	-0.1%
	Projected Annual Growth 2022 to 2027	0.1%	0.2%	0.2%	0.2%
Households	Current Estimated Households	13,982	92,833	179,932	110,831
	2010 Census Households	14,451	93,871	181,808	112,310
	2000 Census Households	14,369	94,449	181,180	112,911
	Historical Annual Growth 2000 to 2010	0.1%	-0.1%	0.0%	-0.1%
	Estimated Annual Growth 2010 to 2022	-0.3%	-0.1%	-0.1%	-0.1%
	Projected Annual Growth 2022 to 2027	0.1%	0.3%	0.2%	0.2%
	Population per Household	2.3	2.5	2.6	2.5
Ethnic	Hispanic or Latino Population	29%	35%	36%	35%
	Non Hispanic or Latino Population	71%	65%	64%	65%
Race	White	58.4%	56.4%	54.5%	57.0%
	Black or African American	11.5%	10.3%	10.4%	10.1%
	Asian & Pacific Islander	13.7%	12.8%	13.5%	12.7%
	Other Races	16.5%	20.5%	21.6%	20.2%