

Hewlett Crossing Hewlett, New York	1 Mile Radius	3 Mile Radius	5 Mile Radius	10 Minute Drive
---------------------------------------	---------------	---------------	---------------	-----------------

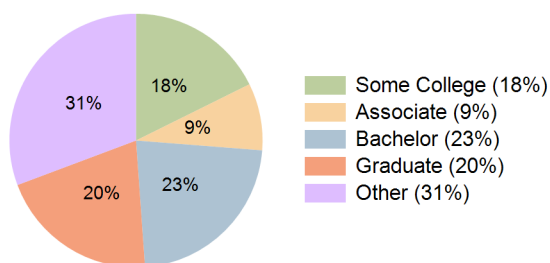
### Current Year Demographics

Current Population	22,326	181,036	566,685	133,586
Total Daytime Pop	19,410	167,214	480,039	127,992
Workplace Pop	8,445	79,806	198,203	60,505
Average Household Income	\$151,676	\$121,312	\$106,897	\$125,385
Median Household Income	\$110,917	\$95,538	\$83,692	\$97,214
Total Households	7,432	60,975	192,189	45,471
Median Home Value	\$633,692	\$563,881	\$536,996	\$581,047
Bachelors Degree	24.9%	21.9%	20.1%	22.6%
Graduate Degree	26.1%	18.9%	15.4%	20.4%
Total Consumer Spending/Capita (Weekly)	\$504	\$487	\$473	\$489

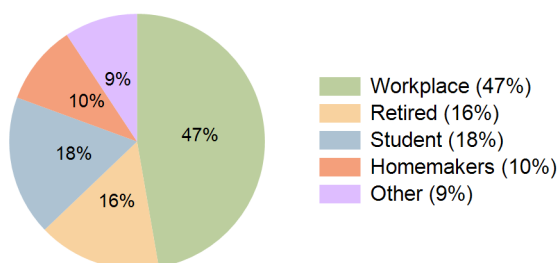
### 2023 Demographic Projections

Projected Population	22,215	181,134	570,893	133,549
Projected 5 Year Annual Growth Rate (Pop)	-0.1%	0.0%	0.1%	0.0%
Projected Households	7,393	60,974	193,907	45,435
Projected 5 Year Annual Growth Rate (HH)	-0.1%	0.0%	0.2%	0.0%

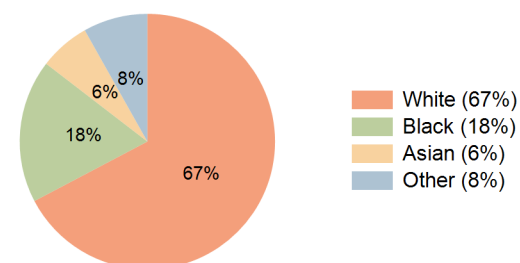
Education (10 Minute Drive)



Daytime Population (10 Minute Drive)



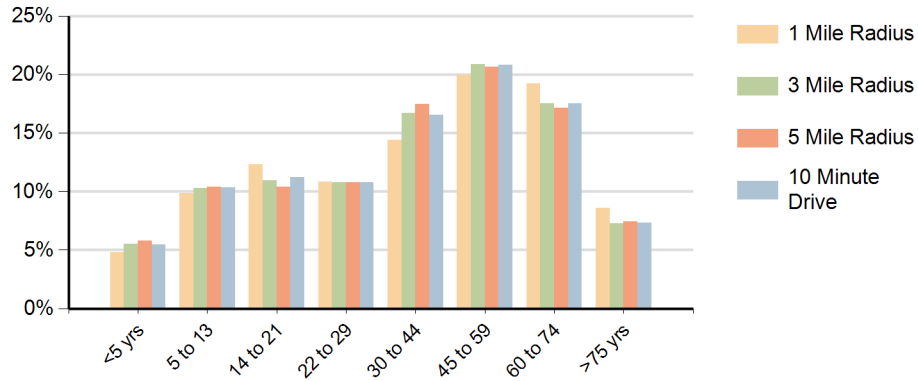
Race (10 Minute Drive)



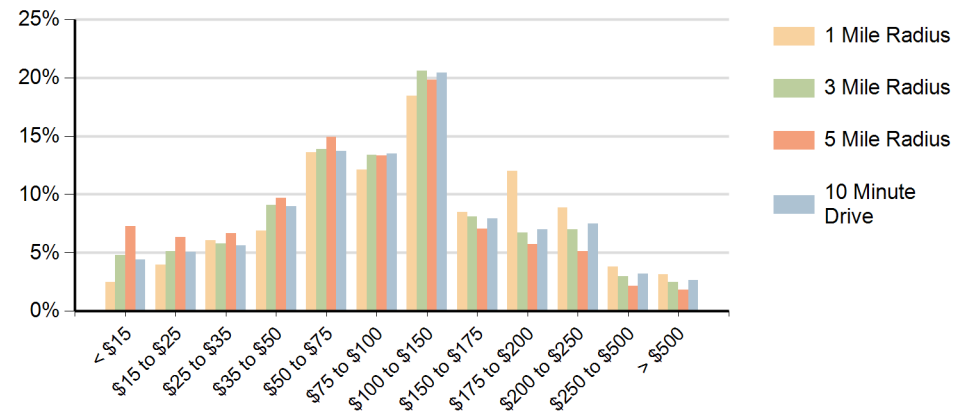
#### Hispanic Ethnicity

14% Hispanic | 86% Non Hispanic

### Population by Age Range



### Households by Income Range (\$000)



Hewlett Crossing Hewlett, New York		1 Mile Radius	3 Mile Radius	5 Mile Radius	10 Minute Drive
Population	Current Estimated Population	22,326	181,036	566,685	133,586
	2010 Census Population	21,991	176,895	549,499	130,613
	2000 Census Population	21,992	175,408	552,450	129,399
	Historical Annual Growth 2000 to 2010	0.0%	0.1%	-0.1%	0.1%
	Estimated Annual Growth 2010 to 2018	0.2%	0.3%	0.4%	0.3%
	Projected Annual Growth 2018 to 2023	-0.1%	0.0%	0.1%	0.0%
Households	Current Estimated Households	7,432	60,975	192,189	45,471
	2010 Census Households	7,323	59,610	186,316	44,470
	2000 Census Households	7,575	60,097	187,475	44,793
	Historical Annual Growth 2000 to 2010	-0.3%	-0.1%	-0.1%	-0.1%
	Estimated Annual Growth 2010 to 2018	0.2%	0.3%	0.4%	0.3%
	Projected Annual Growth 2018 to 2023	-0.1%	0.0%	0.2%	0.0%
	Population per Household	3.0	3.0	2.9	2.9
Ethnic	Hispanic or Latino Population	10%	14%	14%	14%
	Non Hispanic or Latino Population	90%	86%	86%	86%
Race	White	83.7%	61.7%	47.2%	67.3%
	Black or African American	4.4%	23.8%	39.7%	18.1%
	Asian & Pacific Islander	7.0%	6.1%	4.4%	6.4%
	Other Races	4.9%	8.4%	8.7%	8.2%