

Seminole Shoppes
Neptune Beach, Florida

1 Mile Radius

3 Mile Radius

5 Mile Radius

10 Minute Drive

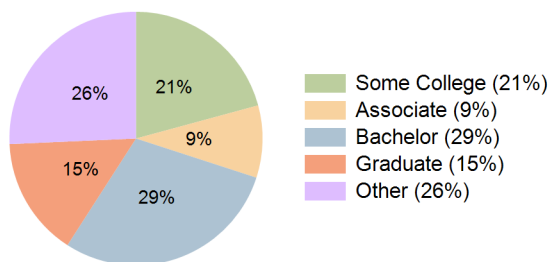
Current Year Demographics

Current Population	11,339	51,314	118,071	80,072
Total Daytime Pop	10,694	46,084	99,188	64,041
Workplace Pop	4,419	18,594	42,477	25,513
Average Household Income	\$124,146	\$117,047	\$115,578	\$110,906
Median Household Income	\$90,461	\$83,436	\$85,408	\$80,935
Total Households	4,997	21,304	47,412	32,221
Median Home Value	\$668,740	\$639,859	\$542,749	\$562,824
Bachelors Degree	34.9%	31.1%	29.0%	29.1%
Graduate Degree	19.3%	16.8%	16.2%	15.2%
Total Consumer Spending/Capita (Weekly)	\$360	\$356	\$356	\$354

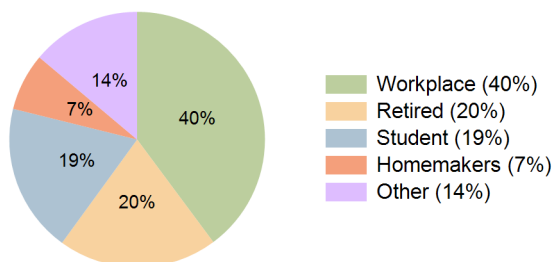
2027 Demographic Projections

Projected Population	11,190	51,424	120,329	81,078
Projected 5 Year Annual Growth Rate (Pop)	-0.3%	0.0%	0.4%	0.2%
Projected Households	4,928	21,339	48,286	32,590
Projected 5 Year Annual Growth Rate (HH)	-0.3%	0.0%	0.4%	0.2%

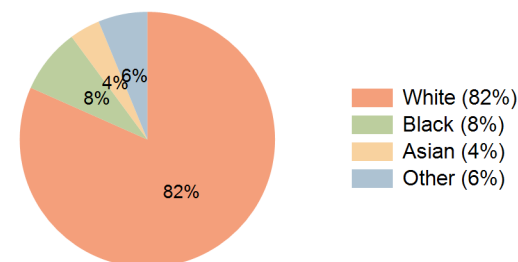
Education (10 Minute Drive)



Daytime Population (10 Minute Drive)

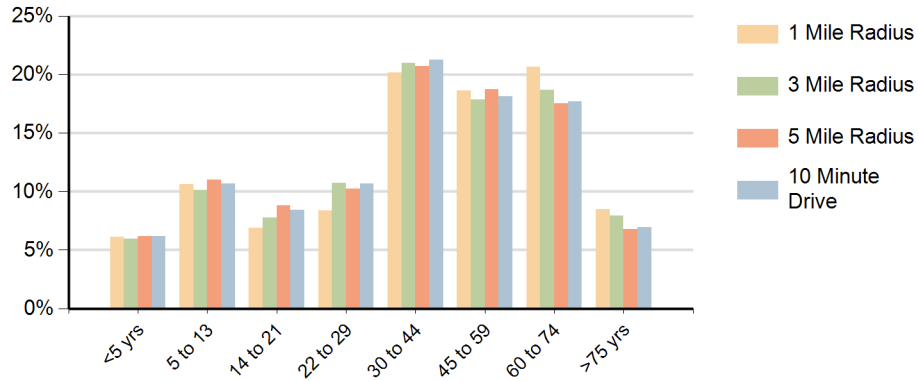


Race (10 Minute Drive)

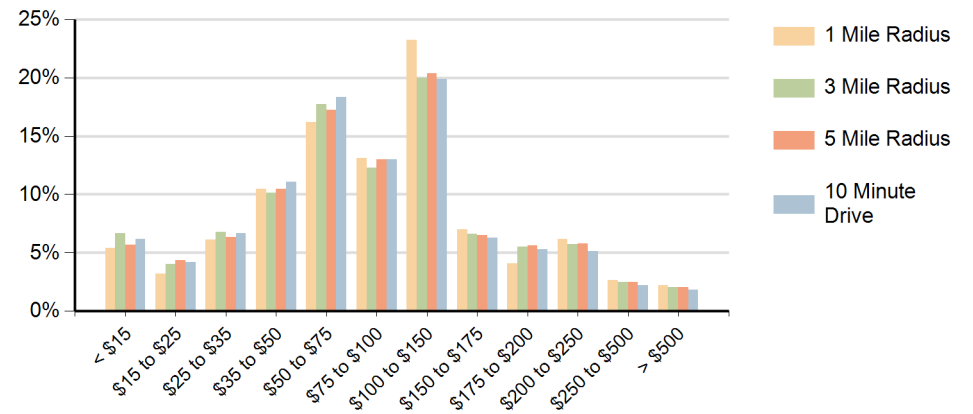


Hispanic Ethnicity
8% Hispanic | 92% Non Hispanic

Population by Age Range



Households by Income Range (\$000)



Seminole Shoppes Neptune Beach, Florida		1 Mile Radius	3 Mile Radius	5 Mile Radius	10 Minute Drive
Population	Current Estimated Population	11,339	51,314	118,071	80,072
	2010 Census Population	10,950	48,068	104,767	72,849
	2000 Census Population	11,756	49,180	102,863	74,110
	Historical Annual Growth 2000 to 2010	-0.7%	-0.2%	0.2%	-0.2%
	Estimated Annual Growth 2010 to 2022	0.3%	0.5%	1.0%	0.8%
	Projected Annual Growth 2022 to 2027	-0.3%	0.0%	0.4%	0.2%
Households	Current Estimated Households	4,997	21,304	47,412	32,221
	2010 Census Households	4,848	19,899	41,978	29,278
	2000 Census Households	5,090	20,322	39,492	28,790
	Historical Annual Growth 2000 to 2010	-0.5%	-0.2%	0.6%	0.2%
	Estimated Annual Growth 2010 to 2022	0.2%	0.6%	1.0%	0.8%
	Projected Annual Growth 2022 to 2027	-0.3%	0.0%	0.4%	0.2%
Population per Household		2.3	2.3	2.4	2.4
Ethnic	Hispanic or Latino Population	5%	7%	8%	8%
	Non Hispanic or Latino Population	95%	93%	92%	92%
Race	White	86.8%	85.1%	81.2%	81.7%
	Black or African American	6.7%	6.9%	8.1%	8.2%
	Asian & Pacific Islander	1.8%	2.4%	4.6%	3.9%
	Other Races	4.6%	5.6%	6.1%	6.2%