

The Crossing Clarendon
Arlington, Virginia

1 Mile Radius

3 Mile Radius

5 Mile Radius

10 Minute Drive

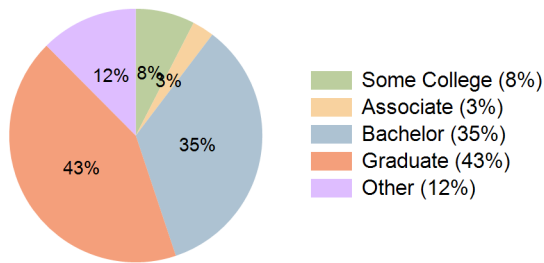
Current Year Demographics

Current Population	49,878	254,850	706,811	276,827
Total Daytime Pop	58,781	473,947	1,249,674	563,467
Workplace Pop	40,573	290,597	754,275	358,393
Average Household Income	\$163,727	\$169,310	\$166,897	\$161,842
Median Household Income	\$134,726	\$125,442	\$123,541	\$123,143
Total Households	26,532	120,060	331,842	132,116
Median Home Value	\$825,177	\$831,607	\$794,855	\$804,963
Bachelors Degree	37.6%	33.8%	31.9%	34.5%
Graduate Degree	45.5%	43.8%	42.1%	42.7%
Total Consumer Spending/Capita (Weekly)	\$427	\$424	\$422	\$424

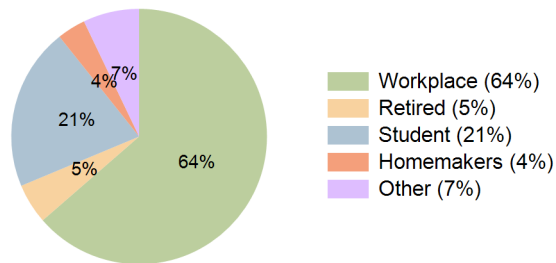
2027 Demographic Projections

Projected Population	50,493	252,589	719,245	275,323
Projected 5 Year Annual Growth Rate (Pop)	0.2%	-0.2%	0.3%	-0.1%
Projected Households	26,917	119,450	338,590	131,924
Projected 5 Year Annual Growth Rate (HH)	0.3%	-0.1%	0.4%	0.0%

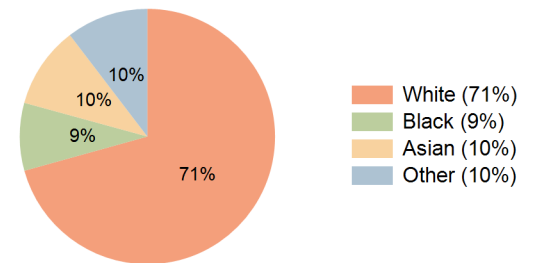
Education (10 Minute Drive)



Daytime Population (10 Minute Drive)



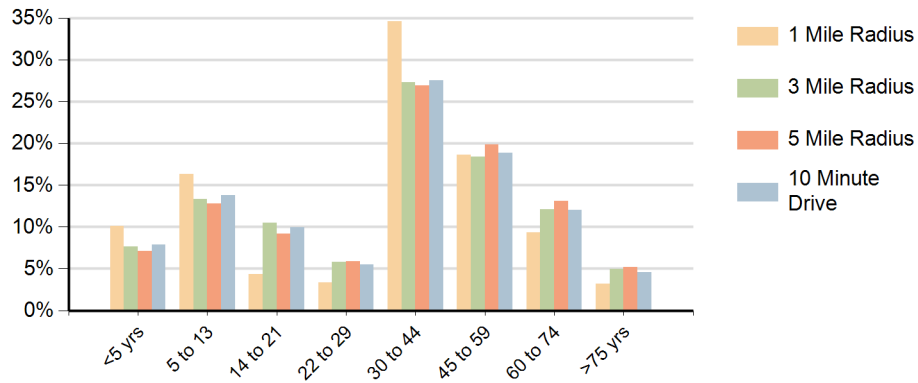
Race (10 Minute Drive)



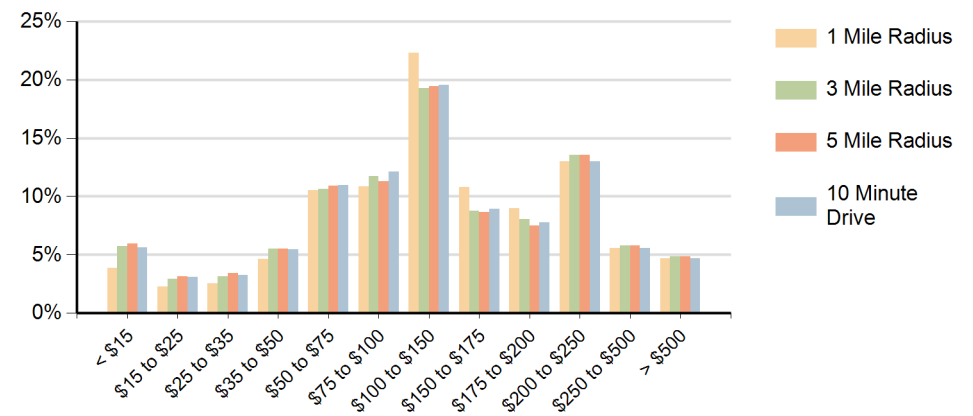
Hispanic Ethnicity

15% Hispanic | 85% Non Hispanic

Population by Age Range



Households by Income Range (\$000)



The Crossing Clarendon Arlington, Virginia		1 Mile Radius	3 Mile Radius	5 Mile Radius	10 Minute Drive
Population	Current Estimated Population	49,878	254,850	706,811	276,827
	2010 Census Population	42,066	234,170	639,533	251,730
	2000 Census Population	33,177	212,976	590,072	224,828
	Historical Annual Growth 2000 to 2010	2.4%	1.0%	0.8%	1.1%
	Estimated Annual Growth 2010 to 2022	1.4%	0.7%	0.8%	0.8%
	Projected Annual Growth 2022 to 2027	0.2%	-0.2%	0.3%	-0.1%
Households	Current Estimated Households	26,532	120,060	331,842	132,116
	2010 Census Households	22,154	108,692	297,007	118,212
	2000 Census Households	16,626	98,746	269,782	105,341
	Historical Annual Growth 2000 to 2010	2.9%	1.0%	1.0%	1.2%
	Estimated Annual Growth 2010 to 2022	1.5%	0.8%	0.9%	0.9%
	Projected Annual Growth 2022 to 2027	0.3%	-0.1%	0.4%	0.0%
	Population per Household	1.8	2.0	2.0	2.0
Ethnic	Hispanic or Latino Population	11%	14%	15%	15%
	Non Hispanic or Latino Population	89%	86%	85%	85%
Race	White	75.4%	71.4%	65.0%	70.7%
	Black or African American	5.1%	8.4%	15.5%	8.6%
	Asian & Pacific Islander	11.1%	10.4%	8.5%	10.4%
	Other Races	8.3%	9.9%	10.9%	10.4%

This report was produced using data from private and government sources deemed to be reliable and is herein provided without representation or warranty.