

**Sandy Springs**  
Sandy Springs, Georgia

**1 Mile Radius**

**3 Mile Radius**

**5 Mile Radius**

**10 Minute Drive**

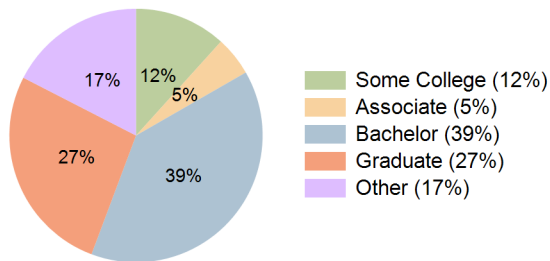
### Current Year Demographics

Current Population	8,604	91,328	220,192	157,787
Total Daytime Pop	29,605	183,030	350,623	293,898
Workplace Pop	24,689	130,235	229,123	209,565
Average Household Income	\$118,887	\$131,035	\$137,491	\$127,093
Median Household Income	\$80,140	\$89,053	\$90,083	\$82,887
Total Households	4,264	41,579	98,594	73,421
Median Home Value	\$509,416	\$609,781	\$611,318	\$594,678
Bachelors Degree	41.6%	39.0%	40.1%	39.0%
Graduate Degree	25.1%	27.6%	28.3%	26.8%
Total Consumer Spending/Capita (Weekly)	\$338	\$343	\$348	\$340

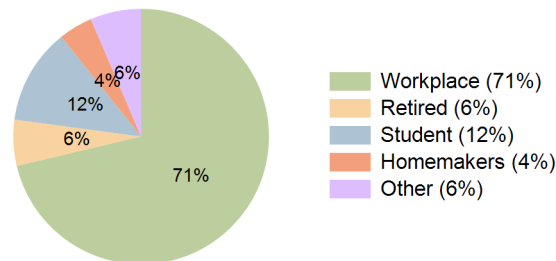
### 2024 Demographic Projections

Projected Population	10,739	108,907	251,571	183,961
Projected 5 Year Annual Growth Rate (Pop)	4.5%	3.6%	2.7%	3.1%
Projected Households	5,326	49,738	113,133	85,774
Projected 5 Year Annual Growth Rate (HH)	4.5%	3.6%	2.8%	3.2%

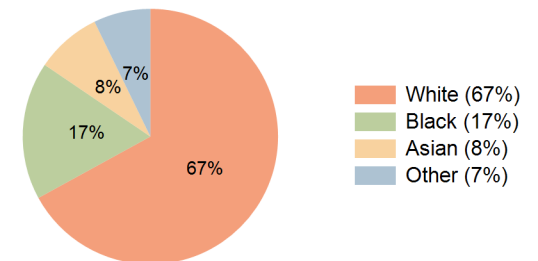
**Education (10 Minute Drive)**



**Daytime Population (10 Minute Drive)**



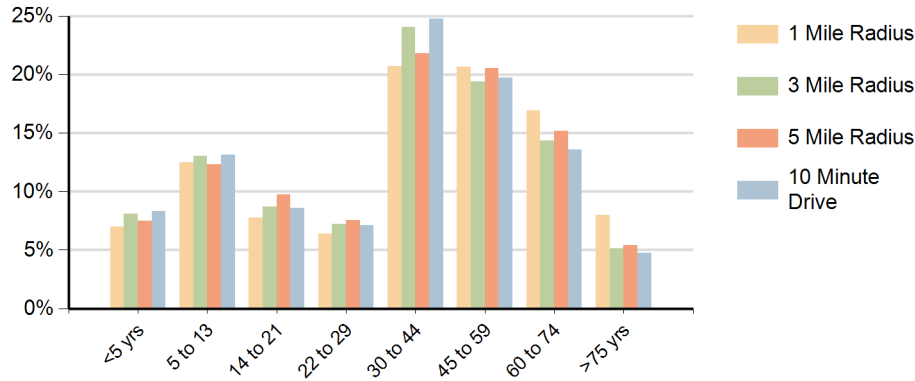
**Race (10 Minute Drive)**



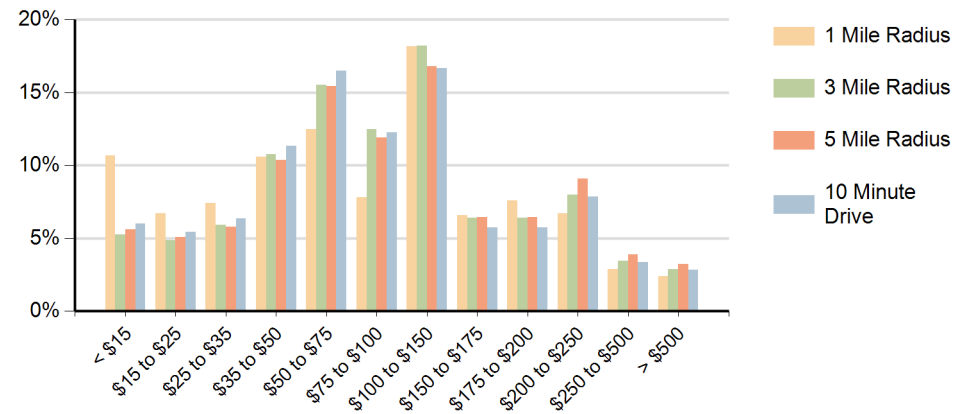
**Hispanic Ethnicity**

11% Hispanic | 89% Non Hispanic

### Population by Age Range



### Households by Income Range (\$000)



Sandy Springs Sandy Springs, Georgia		1 Mile Radius	3 Mile Radius	5 Mile Radius	10 Minute Drive
Population	Current Estimated Population	8,604	91,328	220,192	157,787
	2010 Census Population	6,998	76,849	193,440	136,830
	2000 Census Population	6,139	66,353	173,048	117,907
	Historical Annual Growth 2000 to 2010	1.3%	1.5%	1.1%	1.5%
	Estimated Annual Growth 2010 to 2019	2.3%	1.9%	1.4%	1.6%
	Projected Annual Growth 2019 to 2024	4.5%	3.6%	2.7%	3.1%
Households	Current Estimated Households	4,264	41,579	98,594	73,421
	2010 Census Households	3,450	34,811	86,043	63,413
	2000 Census Households	3,029	29,708	76,289	54,369
	Historical Annual Growth 2000 to 2010	1.3%	1.6%	1.2%	1.6%
	Estimated Annual Growth 2010 to 2019	2.4%	2.0%	1.5%	1.6%
	Projected Annual Growth 2019 to 2024	4.5%	3.6%	2.8%	3.2%
	Population per Household	2.0	2.2	2.2	2.1
Ethnic	Hispanic or Latino Population	11%	13%	10%	11%
	Non Hispanic or Latino Population	89%	87%	90%	89%
Race	White	80.0%	68.8%	71.6%	67.0%
	Black or African American	9.4%	14.5%	14.3%	17.5%
	Asian & Pacific Islander	4.4%	8.9%	8.0%	8.3%
	Other Races	6.2%	7.8%	6.1%	7.2%