

Willow Oaks Crossing
Concord, North Carolina

1 Mile Radius

3 Mile Radius

5 Mile Radius

10 Minute Drive

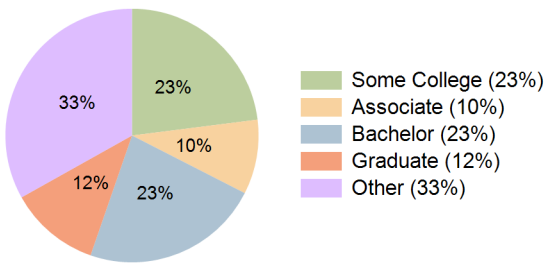
Current Year Demographics

Current Population	4,969	37,862	109,658	103,562
Total Daytime Pop	2,969	37,664	119,506	116,594
Workplace Pop	623	16,728	55,814	55,127
Average Household Income	\$119,835	\$104,302	\$91,196	\$91,542
Median Household Income	\$88,859	\$79,131	\$69,929	\$70,216
Total Households	1,694	13,882	40,901	38,620
Median Home Value	\$429,870	\$354,839	\$321,984	\$326,374
Bachelors Degree	27.0%	26.5%	22.1%	22.8%
Graduate Degree	17.3%	13.3%	12.1%	11.6%
Total Consumer Spending/Capita (Weekly)	\$371	\$361	\$354	\$354

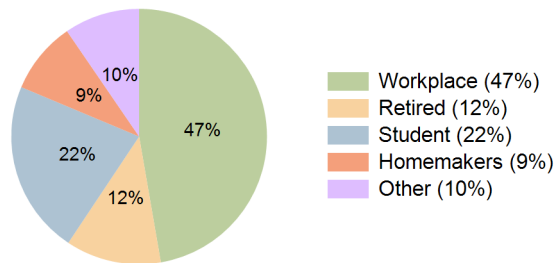
2027 Demographic Projections

Projected Population	5,465	41,260	117,923	111,607
Projected 5 Year Annual Growth Rate (Pop)	1.9%	1.7%	1.5%	1.5%
Projected Households	1,865	15,133	43,983	41,629
Projected 5 Year Annual Growth Rate (HH)	1.9%	1.7%	1.5%	1.5%

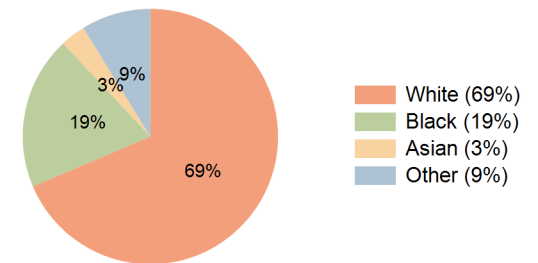
Education (10 Minute Drive)



Daytime Population (10 Minute Drive)



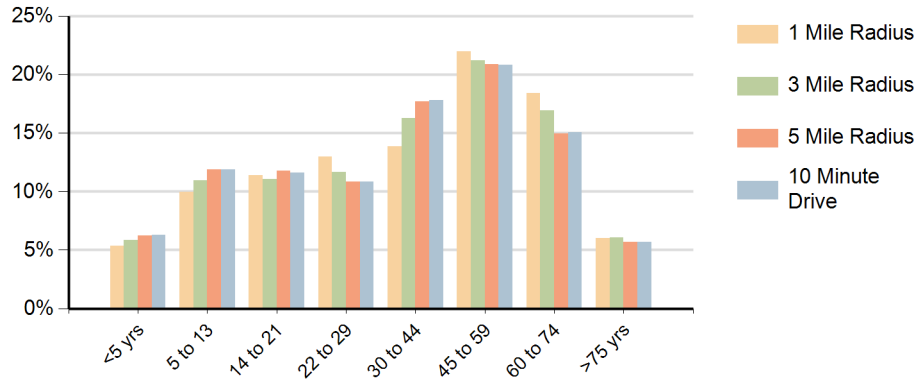
Race (10 Minute Drive)



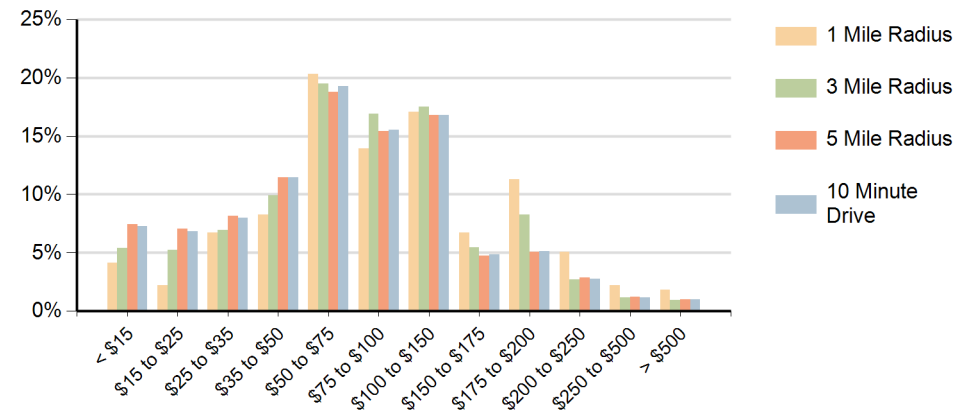
Hispanic Ethnicity

12% Hispanic | 88% Non Hispanic

Population by Age Range



Households by Income Range (\$000)



Willow Oaks Crossing Concord, North Carolina		1 Mile Radius	3 Mile Radius	5 Mile Radius	10 Minute Drive
Population	Current Estimated Population	4,969	37,862	109,658	103,562
	2010 Census Population	3,381	27,010	80,169	75,437
	2000 Census Population	2,473	20,009	60,311	56,118
	Historical Annual Growth 2000 to 2010	3.2%	3.0%	2.9%	3.0%
	Estimated Annual Growth 2010 to 2022	3.2%	2.8%	2.6%	2.6%
	Projected Annual Growth 2022 to 2027	1.9%	1.7%	1.5%	1.5%
Households	Current Estimated Households	1,694	13,882	40,901	38,620
	2010 Census Households	1,150	9,901	29,890	28,101
	2000 Census Households	819	7,016	22,370	20,721
	Historical Annual Growth 2000 to 2010	3.5%	3.5%	2.9%	3.1%
	Estimated Annual Growth 2010 to 2022	3.2%	2.8%	2.6%	2.6%
	Projected Annual Growth 2022 to 2027	1.9%	1.7%	1.5%	1.5%
Ethnic	Population per Household	2.9	2.7	2.7	2.7
	Hispanic or Latino Population	8%	11%	12%	12%
Race	Non Hispanic or Latino Population	92%	89%	88%	88%
	White	78.6%	76.5%	68.0%	68.6%
	Black or African American	10.8%	13.4%	19.7%	19.4%
	Asian & Pacific Islander	3.8%	2.7%	3.4%	3.2%
	Other Races	6.8%	7.3%	8.9%	8.8%

This report was produced using data from private and government sources deemed to be reliable and is herein provided without representation or warranty.