

Persimmon Place
Dublin, California

1 Mile Radius

3 Mile Radius

5 Mile Radius

10 Minute Drive

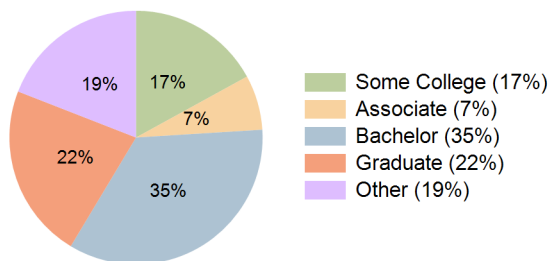
Current Year Demographics

Current Population	18,724	122,850	197,728	172,915
Total Daytime Pop	22,872	147,507	214,258	202,809
Workplace Pop	11,965	78,249	101,431	104,757
Average Household Income	\$152,875	\$149,500	\$155,589	\$150,872
Median Household Income	\$134,467	\$129,053	\$132,509	\$128,849
Total Households	5,569	42,682	68,740	60,405
Median Home Value	\$1,474,055	\$1,455,481	\$1,510,349	\$1,454,051
Bachelors Degree	31.5%	34.8%	35.5%	34.6%
Graduate Degree	20.0%	23.0%	24.1%	22.3%
Total Consumer Spending/Capita (Weekly)	\$436	\$439	\$441	\$439

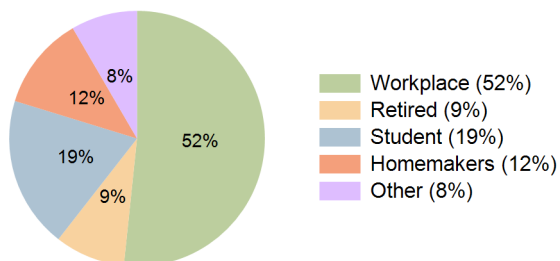
2023 Demographic Projections

Projected Population	22,761	138,576	218,865	191,413
Projected 5 Year Annual Growth Rate (Pop)	4.0%	2.4%	2.1%	2.1%
Projected Households	7,137	48,500	76,452	67,194
Projected 5 Year Annual Growth Rate (HH)	5.1%	2.6%	2.1%	2.2%

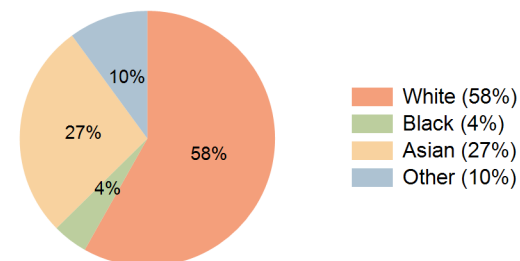
Education (10 Minute Drive)



Daytime Population (10 Minute Drive)

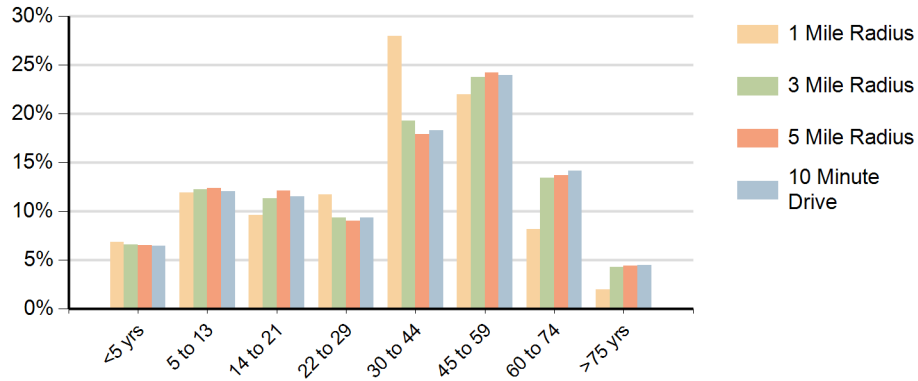


Race (10 Minute Drive)

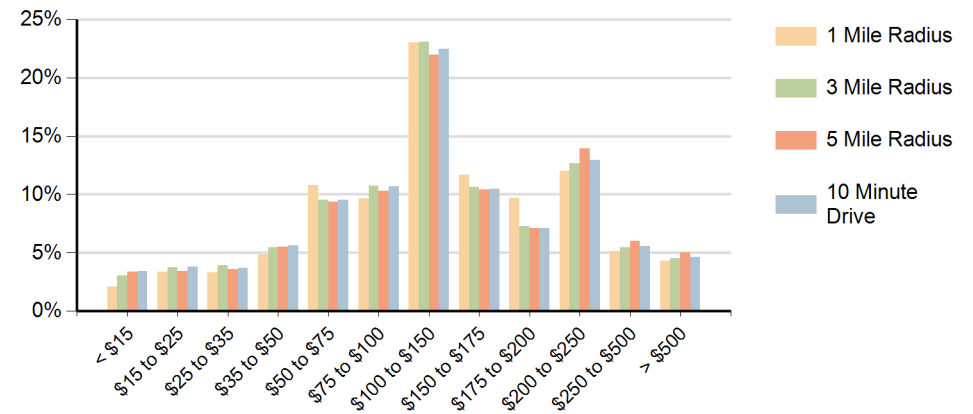


Hispanic Ethnicity
13% Hispanic | 87% Non Hispanic

Population by Age Range



Households by Income Range (\$000)



Persimmon Place Dublin, California		1 Mile Radius	3 Mile Radius	5 Mile Radius	10 Minute Drive
Population	Current Estimated Population	18,724	122,850	197,728	172,915
	2010 Census Population	12,200	94,780	158,458	138,531
	2000 Census Population	7,690	75,821	117,936	112,033
	Historical Annual Growth 2000 to 2010	4.7%	2.3%	3.0%	2.1%
	Estimated Annual Growth 2010 to 2018	5.3%	3.2%	2.7%	2.7%
	Projected Annual Growth 2018 to 2023	4.0%	2.4%	2.1%	2.1%
Households	Current Estimated Households	5,569	42,682	68,740	60,405
	2010 Census Households	3,050	32,322	54,402	47,789
	2000 Census Households	1,631	26,005	41,449	39,091
	Historical Annual Growth 2000 to 2010	6.5%	2.2%	2.8%	2.0%
	Estimated Annual Growth 2010 to 2018	7.6%	3.4%	2.9%	2.9%
	Projected Annual Growth 2018 to 2023	5.1%	2.6%	2.1%	2.2%
Population per Household		2.6	2.7	2.8	2.8
Ethnic	Hispanic or Latino Population	17%	12%	11%	13%
	Non Hispanic or Latino Population	83%	88%	89%	87%
Race	White	41.1%	55.5%	55.6%	58.2%
	Black or African American	15.7%	5.2%	4.3%	4.5%
	Asian & Pacific Islander	29.5%	29.4%	30.7%	27.3%
	Other Races	13.7%	9.9%	9.4%	10.1%