

Rockridge Center
Plymouth, Minnesota

1 Mile Radius

3 Mile Radius

5 Mile Radius

10 Minute Drive

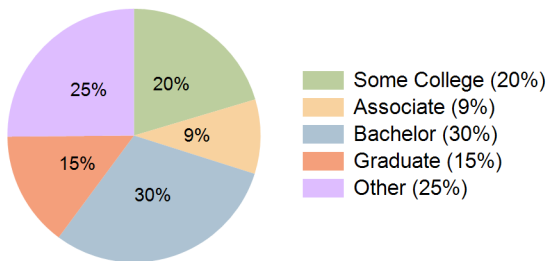
Current Year Demographics

Current Population	11,785	88,367	226,496	164,608
Total Daytime Pop	13,450	102,449	315,090	263,552
Workplace Pop	7,302	61,575	187,853	160,438
Average Household Income	\$92,059	\$91,469	\$91,039	\$92,978
Median Household Income	\$70,684	\$69,216	\$68,108	\$69,721
Total Households	5,000	36,775	92,348	68,744
Median Home Value	\$350,330	\$297,896	\$288,920	\$304,838
Bachelors Degree	32.6%	30.0%	29.0%	30.3%
Graduate Degree	13.6%	13.4%	14.1%	14.7%
Total Consumer Spending/Capita (Weekly)	\$375	\$373	\$371	\$374

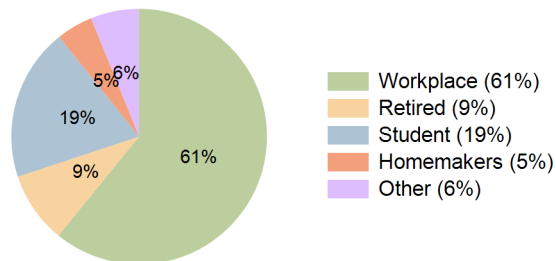
2023 Demographic Projections

Projected Population	11,790	90,280	233,194	170,132
Projected 5 Year Annual Growth Rate (Pop)	0.0%	0.4%	0.6%	0.7%
Projected Households	5,004	37,590	95,019	70,993
Projected 5 Year Annual Growth Rate (HH)	0.0%	0.4%	0.6%	0.6%

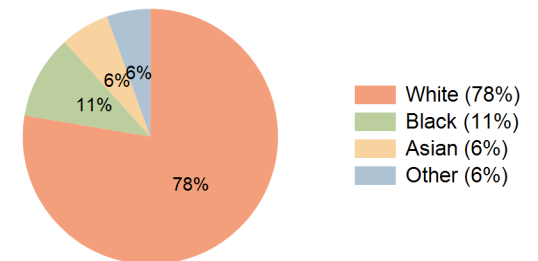
Education (10 Minute Drive)



Daytime Population (10 Minute Drive)

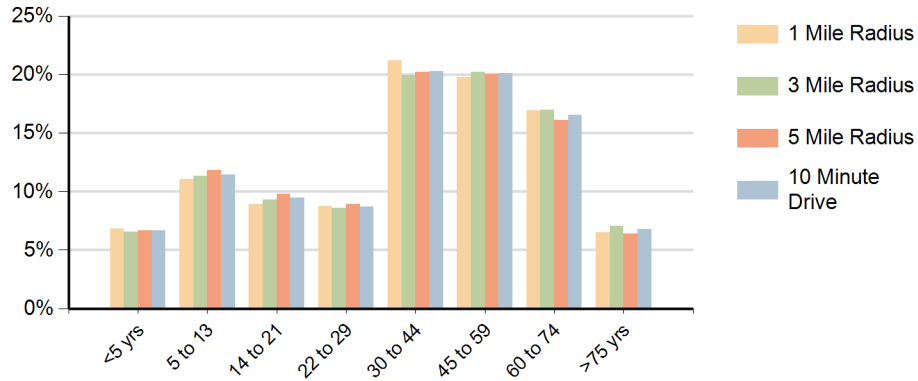


Race (10 Minute Drive)

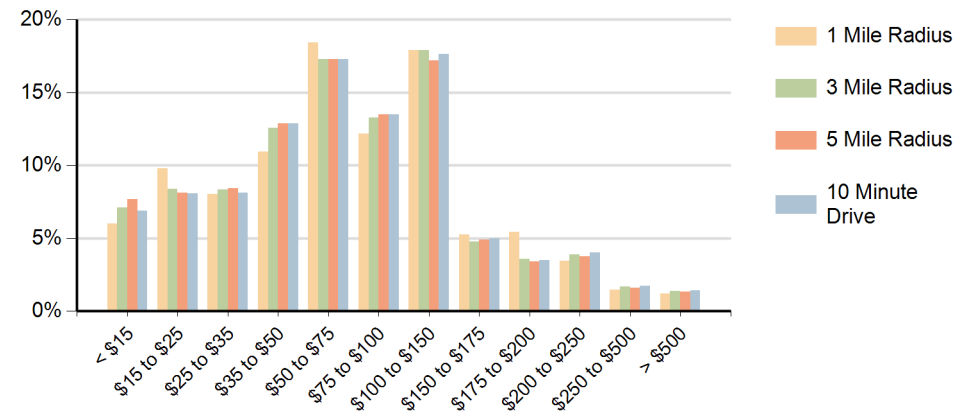


Hispanic Ethnicity
5% Hispanic | 95% Non Hispanic

Population by Age Range



Households by Income Range (\$000)



Rockridge Center Plymouth, Minnesota		1 Mile Radius	3 Mile Radius	5 Mile Radius	10 Minute Drive
Population	Current Estimated Population	11,785	88,367	226,496	164,608
	2010 Census Population	11,552	82,699	209,544	151,623
	2000 Census Population	11,681	82,858	204,506	147,565
	Historical Annual Growth 2000 to 2010	-0.1%	0.0%	0.2%	0.3%
	Estimated Annual Growth 2010 to 2018	0.2%	0.8%	0.9%	1.0%
	Projected Annual Growth 2018 to 2023	0.0%	0.4%	0.6%	0.7%
Households	Current Estimated Households	5,000	36,775	92,348	68,744
	2010 Census Households	4,907	34,339	85,509	63,402
	2000 Census Households	4,737	33,375	82,320	60,180
	Historical Annual Growth 2000 to 2010	0.4%	0.3%	0.4%	0.5%
	Estimated Annual Growth 2010 to 2018	0.2%	0.8%	0.9%	1.0%
	Projected Annual Growth 2018 to 2023	0.0%	0.4%	0.6%	0.6%
	Population per Household	2.3	2.4	2.4	2.4
Ethnic	Hispanic or Latino Population	5%	5%	5%	5%
	Non Hispanic or Latino Population	95%	95%	95%	95%
Race	White	81.4%	79.2%	73.5%	77.7%
	Black or African American	8.3%	10.3%	13.2%	10.6%
	Asian & Pacific Islander	5.2%	5.1%	7.3%	6.2%
	Other Races	5.2%	5.3%	6.0%	5.5%