

Dardenne Crossing
O'Fallon, Missouri

1 Mile Radius

3 Mile Radius

5 Mile Radius

10 Minute Drive

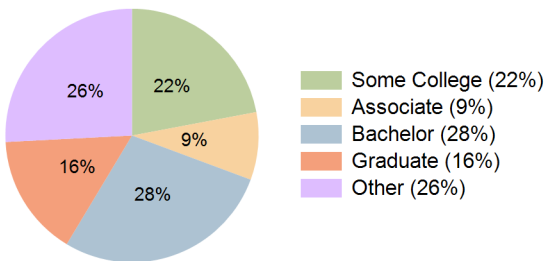
Current Year Demographics

| | | | | |
|---|-----------|-----------|-----------|-----------|
| Current Population | 11,377 | 82,799 | 166,772 | 133,689 |
| Total Daytime Pop | 9,640 | 73,625 | 152,618 | 131,373 |
| Workplace Pop | 3,210 | 22,725 | 52,894 | 47,048 |
| Average Household Income | \$129,879 | \$123,201 | \$115,474 | \$117,700 |
| Median Household Income | \$108,553 | \$106,549 | \$97,083 | \$99,962 |
| Total Households | 3,666 | 28,073 | 59,394 | 47,031 |
| Median Home Value | \$335,426 | \$318,618 | \$295,878 | \$310,482 |
| Bachelors Degree | 31.7% | 29.7% | 27.3% | 28.0% |
| Graduate Degree | 16.0% | 16.0% | 15.2% | 15.6% |
| Total Consumer Spending/Capita (Weekly) | \$377 | \$375 | \$371 | \$372 |

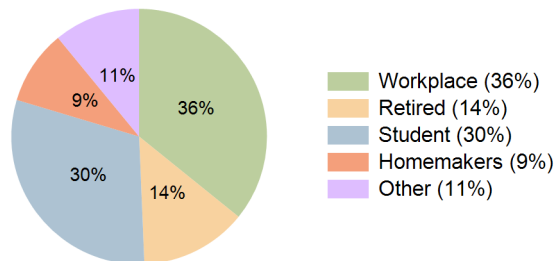
2027 Demographic Projections

| | | | | |
|---|--------|--------|---------|---------|
| Projected Population | 11,517 | 84,773 | 172,477 | 138,076 |
| Projected 5 Year Annual Growth Rate (Pop) | 0.2% | 0.5% | 0.7% | 0.6% |
| Projected Households | 3,711 | 28,761 | 61,479 | 48,619 |
| Projected 5 Year Annual Growth Rate (HH) | 0.2% | 0.5% | 0.7% | 0.7% |

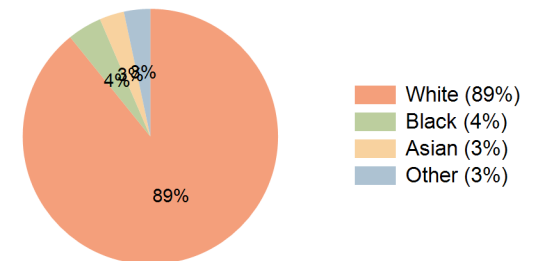
Education (10 Minute Drive)



Daytime Population (10 Minute Drive)

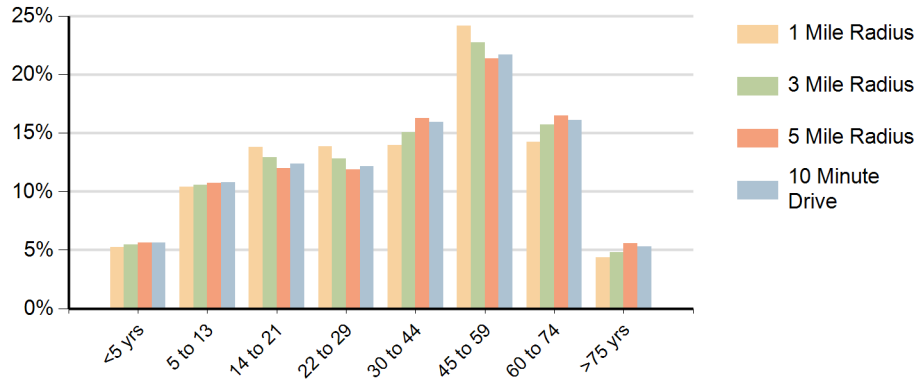


Race (10 Minute Drive)

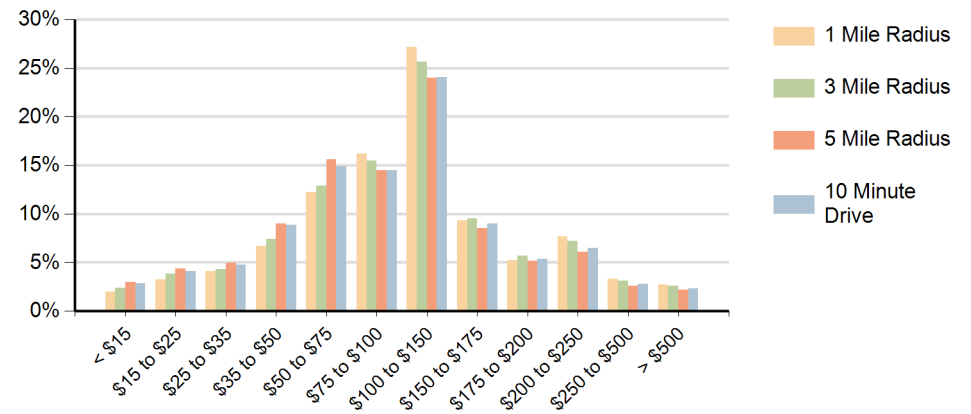


Hispanic Ethnicity
3% Hispanic | 97% Non Hispanic

Population by Age Range



Households by Income Range (\$000)



| Dardenne Crossing O'Fallon, Missouri | | 1 Mile Radius | 3 Mile Radius | 5 Mile Radius | 10 Minute Drive |
|---|---------------------------------------|---------------|---------------|---------------|-----------------|
| Population | Current Estimated Population | 11,377 | 82,799 | 166,772 | 133,689 |
| | 2010 Census Population | 10,608 | 74,250 | 146,444 | 117,447 |
| | 2000 Census Population | 6,823 | 51,597 | 108,864 | 84,826 |
| | Historical Annual Growth 2000 to 2010 | 4.5% | 3.7% | 3.0% | 3.3% |
| | Estimated Annual Growth 2010 to 2022 | 0.6% | 0.9% | 1.1% | 1.1% |
| | Projected Annual Growth 2022 to 2027 | 0.2% | 0.5% | 0.7% | 0.6% |
| Households | Current Estimated Households | 3,666 | 28,073 | 59,394 | 47,031 |
| | 2010 Census Households | 3,416 | 25,122 | 52,074 | 41,234 |
| | 2000 Census Households | 2,133 | 16,605 | 36,637 | 28,158 |
| | Historical Annual Growth 2000 to 2010 | 4.8% | 4.2% | 3.6% | 3.9% |
| | Estimated Annual Growth 2010 to 2022 | 0.6% | 0.9% | 1.1% | 1.1% |
| | Projected Annual Growth 2022 to 2027 | 0.2% | 0.5% | 0.7% | 0.7% |
| | Population per Household | 3.1 | 2.9 | 2.8 | 2.8 |
| Ethnic | Hispanic or Latino Population | 2% | 2% | 3% | 3% |
| | Non Hispanic or Latino Population | 98% | 98% | 97% | 97% |
| Race | White | 89.3% | 89.0% | 89.8% | 89.2% |
| | Black or African American | 3.9% | 3.9% | 4.1% | 4.3% |
| | Asian & Pacific Islander | 3.8% | 3.6% | 2.8% | 3.1% |
| | Other Races | 3.1% | 3.4% | 3.3% | 3.3% |