

Cochran Commons
Charlotte, North Carolina

1 Mile Radius

3 Mile Radius

5 Mile Radius

10 Minute Drive

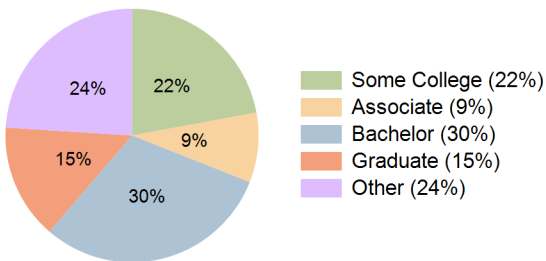
Current Year Demographics

Current Population	7,240	69,392	164,400	99,529
Total Daytime Pop	14,751	85,767	209,231	154,456
Workplace Pop	10,737	45,966	96,624	71,392
Average Household Income	\$89,861	\$75,230	\$72,280	\$69,996
Median Household Income	\$72,247	\$62,367	\$57,445	\$57,266
Total Households	2,792	28,562	62,610	39,009
Median Home Value	\$271,570	\$226,645	\$211,943	\$213,239
Bachelors Degree	32.0%	32.1%	28.5%	30.3%
Graduate Degree	19.5%	16.8%	13.7%	14.7%
Total Consumer Spending/Capita (Weekly)	\$323	\$305	\$300	\$298

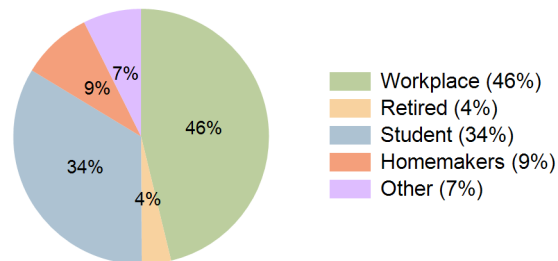
2023 Demographic Projections

Projected Population	7,510	73,481	177,060	106,315
Projected 5 Year Annual Growth Rate (Pop)	0.7%	1.2%	1.5%	1.3%
Projected Households	2,885	30,308	67,538	41,764
Projected 5 Year Annual Growth Rate (HH)	0.7%	1.2%	1.5%	1.4%

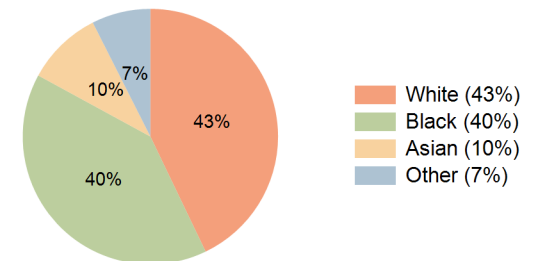
Education (10 Minute Drive)



Daytime Population (10 Minute Drive)

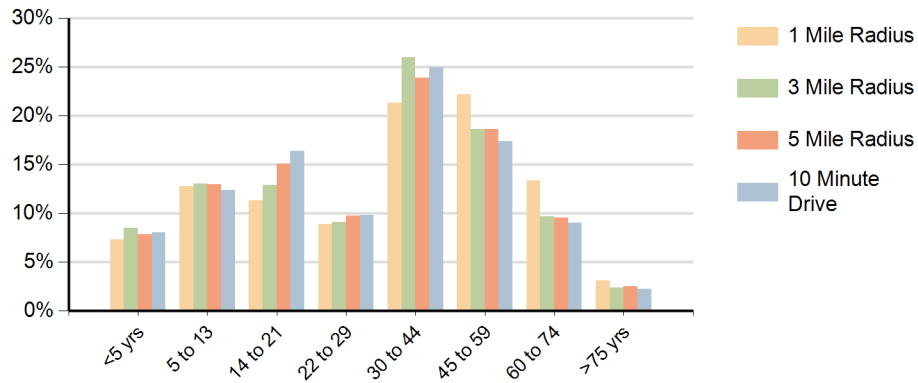


Race (10 Minute Drive)

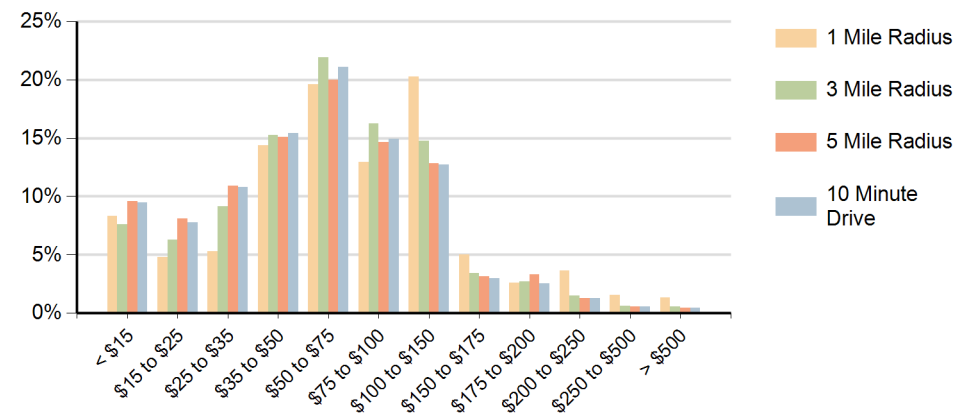


Hispanic Ethnicity
9% Hispanic | 91% Non Hispanic

Population by Age Range



Households by Income Range (\$000)



Cochran Commons Charlotte, North Carolina		1 Mile Radius	3 Mile Radius	5 Mile Radius	10 Minute Drive
Population	Current Estimated Population	7,240	69,392	164,400	99,529
	2010 Census Population	6,796	60,745	139,160	86,141
	2000 Census Population	3,705	37,324	83,160	52,635
	Historical Annual Growth 2000 to 2010	6.3%	5.0%	5.3%	5.0%
	Estimated Annual Growth 2010 to 2018	0.8%	1.6%	2.0%	1.8%
	Projected Annual Growth 2018 to 2023	0.7%	1.2%	1.5%	1.3%
Households	Current Estimated Households	2,792	28,562	62,610	39,009
	2010 Census Households	2,630	24,953	52,844	33,617
	2000 Census Households	1,275	14,280	30,549	19,625
	Historical Annual Growth 2000 to 2010	7.5%	5.7%	5.6%	5.5%
	Estimated Annual Growth 2010 to 2018	0.7%	1.7%	2.1%	1.8%
	Projected Annual Growth 2018 to 2023	0.7%	1.2%	1.5%	1.4%
	Population per Household	2.6	2.4	2.6	2.5
Ethnic	Hispanic or Latino Population	7%	8%	11%	9%
	Non Hispanic or Latino Population	93%	92%	89%	91%
Race	White	43.5%	44.3%	42.9%	42.9%
	Black or African American	35.3%	38.6%	40.7%	40.1%
	Asian & Pacific Islander	16.1%	10.9%	7.7%	9.6%
	Other Races	5.1%	6.3%	8.7%	7.5%