

Corkscrew Village
Estero, Florida

1 Mile Radius

3 Mile Radius

5 Mile Radius

10 Minute Drive

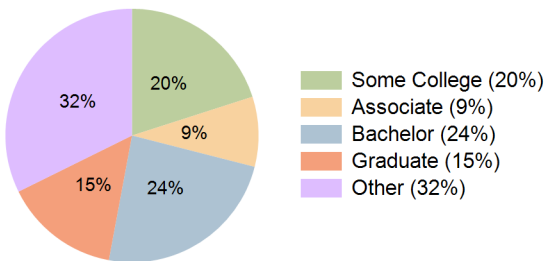
Current Year Demographics

Current Population	4,211	42,899	77,738	63,434
Total Daytime Pop	9,138	44,074	85,493	74,665
Workplace Pop	3,733	12,452	25,498	24,898
Average Household Income	\$87,344	\$94,988	\$95,985	\$97,710
Median Household Income	\$62,304	\$66,661	\$66,671	\$67,263
Total Households	2,094	19,549	33,431	28,331
Median Home Value	\$476,867	\$481,792	\$473,546	\$486,542
Bachelors Degree	27.3%	24.5%	23.2%	24.0%
Graduate Degree	15.3%	14.5%	14.4%	14.8%
Total Consumer Spending/Capita (Weekly)	\$333	\$331	\$330	\$331

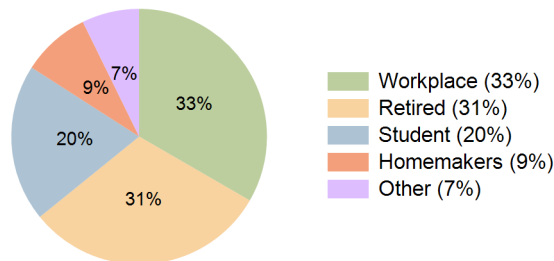
2023 Demographic Projections

Projected Population	4,875	48,980	87,899	71,783
Projected 5 Year Annual Growth Rate (Pop)	3.0%	2.7%	2.5%	2.5%
Projected Households	2,423	22,411	38,057	32,210
Projected 5 Year Annual Growth Rate (HH)	3.0%	2.8%	2.6%	2.6%

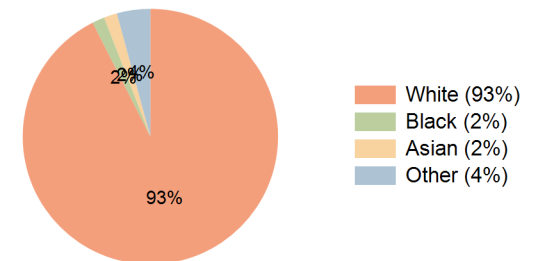
Education (10 Minute Drive)



Daytime Population (10 Minute Drive)



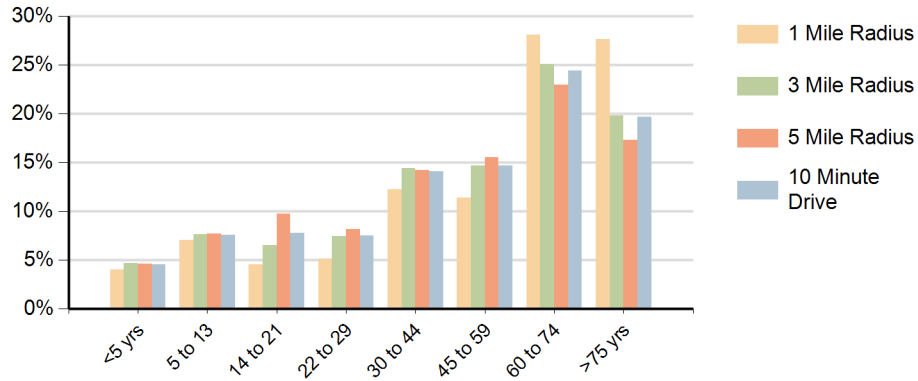
Race (10 Minute Drive)



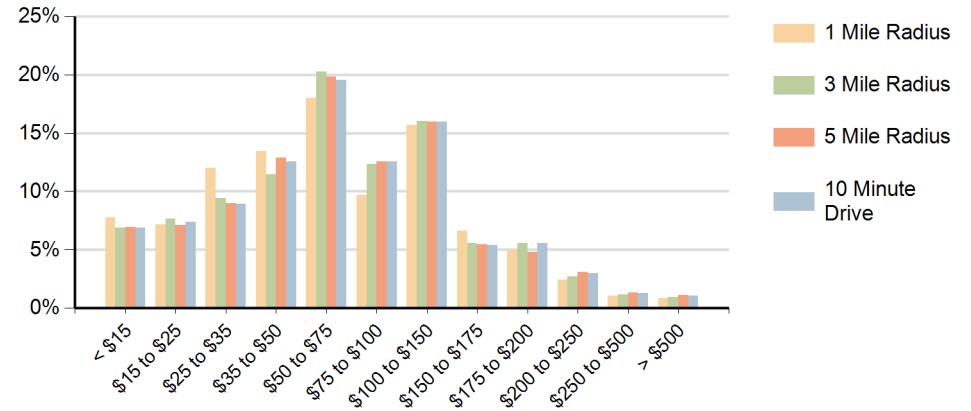
Hispanic Ethnicity

11% Hispanic | 89% Non Hispanic

Population by Age Range



Households by Income Range (\$000)



Corkscrew Village Estero, Florida		1 Mile Radius	3 Mile Radius	5 Mile Radius	10 Minute Drive
Population	Current Estimated Population	4,211	42,899	77,738	63,434
	2010 Census Population	3,337	34,411	63,228	51,678
	2000 Census Population	1,508	19,397	37,901	30,383
	Historical Annual Growth 2000 to 2010	8.3%	5.9%	5.3%	5.5%
	Estimated Annual Growth 2010 to 2018	2.9%	2.7%	2.5%	2.5%
	Projected Annual Growth 2018 to 2023	3.0%	2.7%	2.5%	2.5%
Households	Current Estimated Households	2,094	19,549	33,431	28,331
	2010 Census Households	1,661	15,580	26,841	22,890
	2000 Census Households	780	8,351	15,908	13,146
	Historical Annual Growth 2000 to 2010	7.9%	6.4%	5.4%	5.7%
	Estimated Annual Growth 2010 to 2018	2.8%	2.8%	2.7%	2.6%
	Projected Annual Growth 2018 to 2023	3.0%	2.8%	2.6%	2.6%
	Population per Household	2.0	2.2	2.2	2.2
Ethnic	Hispanic or Latino Population	8%	10%	11%	11%
	Non Hispanic or Latino Population	92%	90%	89%	89%
Race	White	94.7%	92.9%	92.6%	92.5%
	Black or African American	1.0%	1.7%	1.7%	1.6%
	Asian & Pacific Islander	1.7%	1.7%	1.7%	1.7%
	Other Races	2.6%	3.7%	4.0%	4.2%