

Shops at Saugus Saugus, Massachusetts	1 Mile Radius	3 Mile Radius	5 Mile Radius	10 Minute Drive
--	---------------	---------------	---------------	-----------------

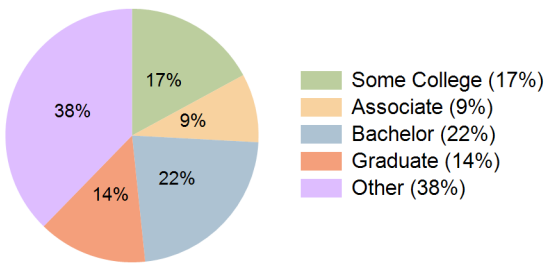
Current Year Demographics

Current Population	5,015	93,173	342,357	93,373
Total Daytime Pop	4,027	75,263	264,593	77,505
Workplace Pop	2,364	29,306	94,262	29,436
Average Household Income	\$98,920	\$101,479	\$88,098	\$99,761
Median Household Income	\$83,117	\$84,762	\$69,225	\$82,434
Total Households	1,926	35,797	134,568	36,926
Median Home Value	\$492,492	\$480,930	\$463,253	\$485,787
Bachelors Degree	18.7%	22.6%	19.9%	22.5%
Graduate Degree	8.8%	13.3%	12.5%	14.0%
Total Consumer Spending/Capita (Weekly)	\$382	\$379	\$365	\$379

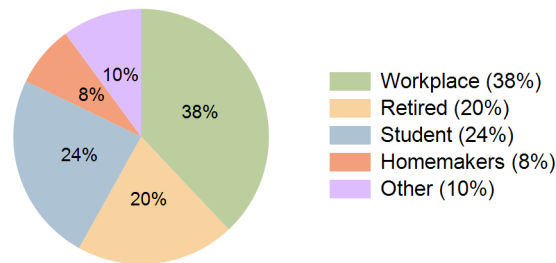
2023 Demographic Projections

Projected Population	5,029	94,301	346,830	95,339
Projected 5 Year Annual Growth Rate (Pop)	0.1%	0.2%	0.3%	0.4%
Projected Households	1,933	36,250	136,537	37,727
Projected 5 Year Annual Growth Rate (HH)	0.1%	0.3%	0.3%	0.4%

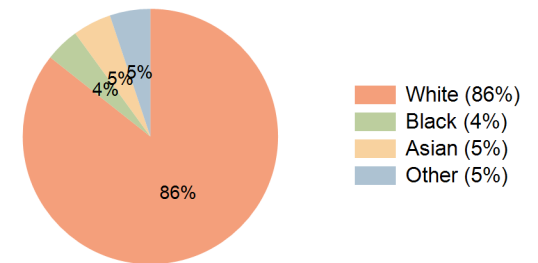
Education (10 Minute Drive)



Daytime Population (10 Minute Drive)

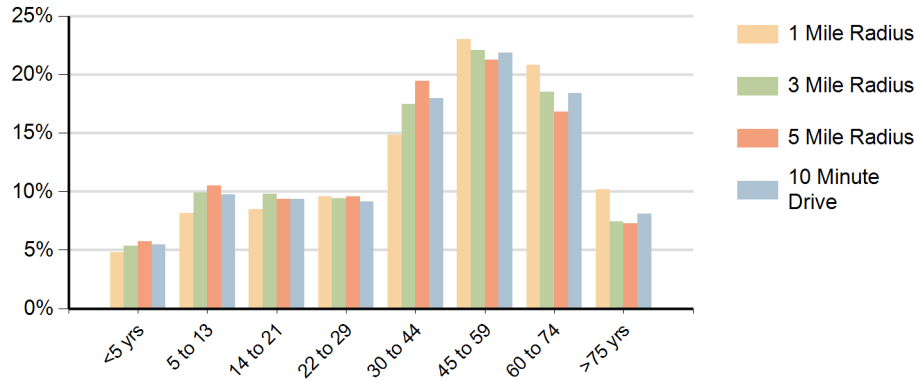


Race (10 Minute Drive)

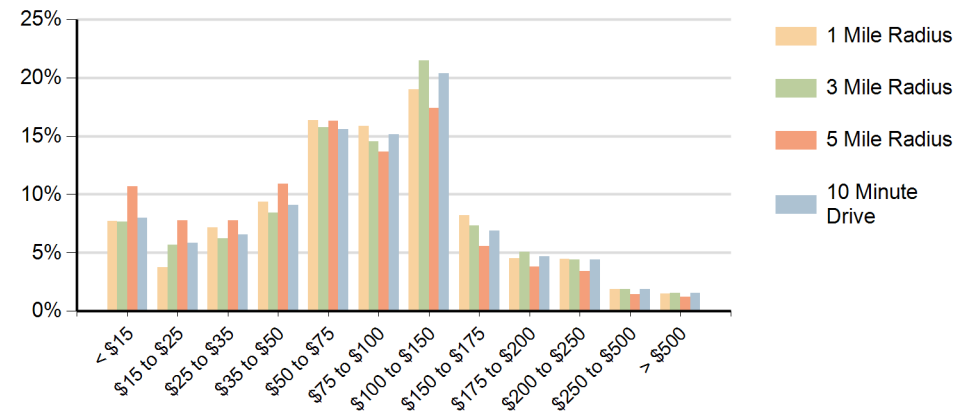


Hispanic Ethnicity
7% Hispanic | 93% Non Hispanic

Population by Age Range



Households by Income Range (\$000)



Shops at Saugus Saugus, Massachusetts		1 Mile Radius	3 Mile Radius	5 Mile Radius	10 Minute Drive
Population	Current Estimated Population	5,015	93,173	342,357	93,373
	2010 Census Population	4,768	88,159	321,420	86,269
	2000 Census Population	4,683	84,995	312,598	80,982
	Historical Annual Growth 2000 to 2010	0.2%	0.4%	0.3%	0.6%
	Estimated Annual Growth 2010 to 2018	0.6%	0.7%	0.8%	1.0%
	Projected Annual Growth 2018 to 2023	0.1%	0.2%	0.3%	0.4%
Households	Current Estimated Households	1,926	35,797	134,568	36,926
	2010 Census Households	1,826	33,819	125,849	34,041
	2000 Census Households	1,795	32,118	122,317	31,180
	Historical Annual Growth 2000 to 2010	0.2%	0.5%	0.3%	0.9%
	Estimated Annual Growth 2010 to 2018	0.7%	0.7%	0.8%	1.0%
	Projected Annual Growth 2018 to 2023	0.1%	0.3%	0.3%	0.4%
	Population per Household	2.6	2.6	2.5	2.5
Ethnic	Hispanic or Latino Population	2%	9%	14%	7%
	Non Hispanic or Latino Population	98%	91%	86%	93%
Race	White	93.2%	85.7%	74.9%	85.7%
	Black or African American	1.3%	3.8%	7.4%	4.3%
	Asian & Pacific Islander	3.6%	4.0%	7.1%	4.9%
	Other Races	1.9%	6.5%	10.6%	5.1%