

Oakleaf Commons Orange Park, Florida	1 Mile Radius	3 Mile Radius	5 Mile Radius	10 Minute Drive
---	---------------	---------------	---------------	-----------------

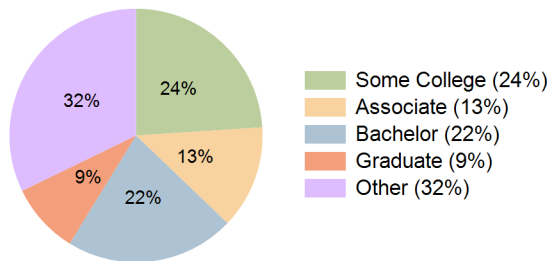
Current Year Demographics

Current Population	4,041	34,030	94,463	22,232
Total Daytime Pop	4,693	18,388	57,946	17,071
Workplace Pop	145	925	11,563	1,166
Average Household Income	\$84,973	\$87,594	\$76,690	\$88,483
Median Household Income	\$74,531	\$78,726	\$66,032	\$78,845
Total Households	1,341	10,979	32,441	7,133
Median Home Value	\$326,473	\$283,834	\$241,831	\$289,496
Bachelors Degree	20.5%	21.8%	17.8%	21.6%
Graduate Degree	8.3%	9.1%	6.8%	9.0%
Total Consumer Spending/Capita (Weekly)	\$312	\$315	\$306	\$315

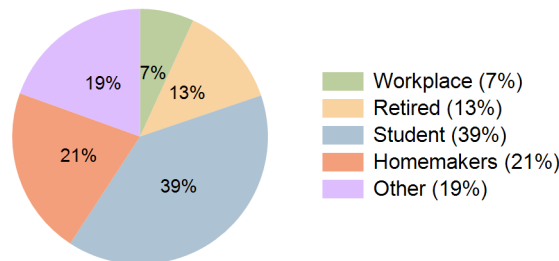
2023 Demographic Projections

Projected Population	5,075	40,414	107,284	26,542
Projected 5 Year Annual Growth Rate (Pop)	4.7%	3.5%	2.6%	3.6%
Projected Households	1,689	13,079	36,829	8,549
Projected 5 Year Annual Growth Rate (HH)	4.7%	3.6%	2.6%	3.7%

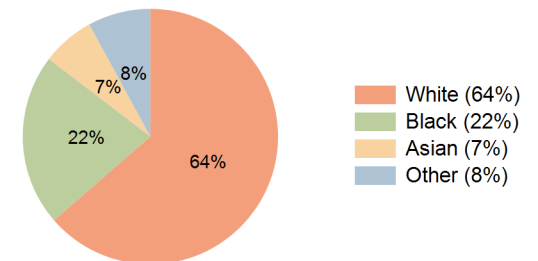
Education (10 Minute Drive)



Daytime Population (10 Minute Drive)



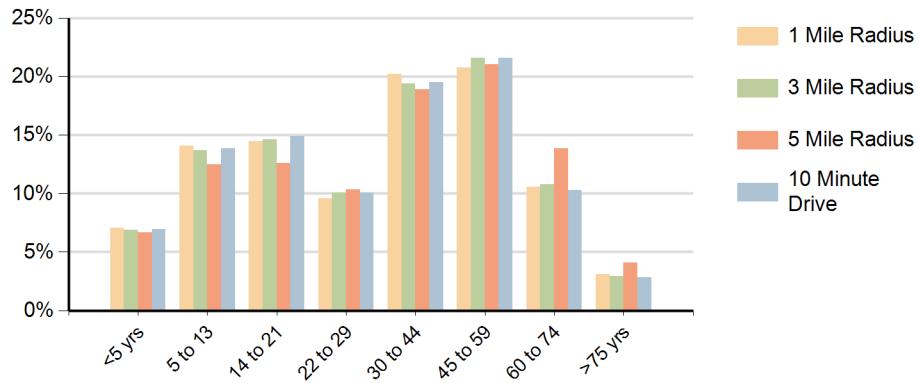
Race (10 Minute Drive)



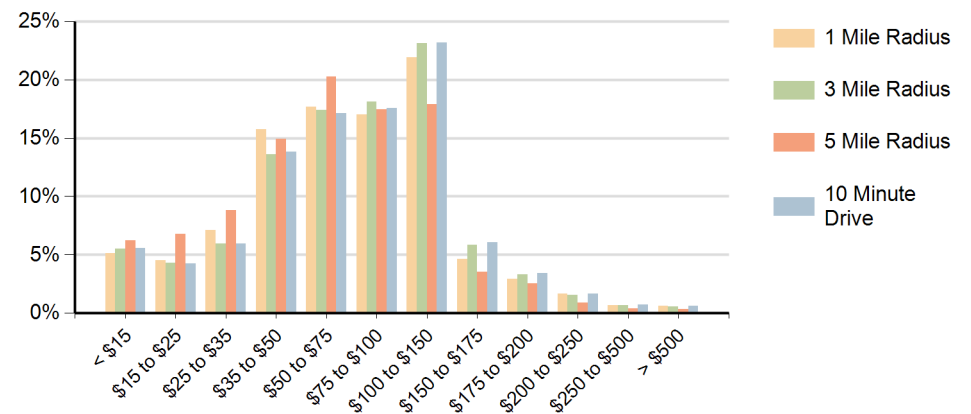
Hispanic Ethnicity

11% Hispanic | 89% Non Hispanic

Population by Age Range



Households by Income Range (\$000)



Oakleaf Commons Orange Park, Florida		1 Mile Radius	3 Mile Radius	5 Mile Radius	10 Minute Drive
Population	Current Estimated Population	4,041	34,030	94,463	22,232
	2010 Census Population	2,560	25,606	78,467	16,529
	2000 Census Population	653	7,587	49,956	4,223
	Historical Annual Growth 2000 to 2010	14.6%	12.9%	4.6%	14.6%
	Estimated Annual Growth 2010 to 2018	5.7%	3.5%	2.3%	3.7%
	Projected Annual Growth 2018 to 2023	4.7%	3.5%	2.6%	3.6%
Households	Current Estimated Households	1,341	10,979	32,441	7,133
	2010 Census Households	842	8,180	26,955	5,239
	2000 Census Households	221	2,483	17,161	1,387
	Historical Annual Growth 2000 to 2010	14.3%	12.7%	4.6%	14.2%
	Estimated Annual Growth 2010 to 2018	5.8%	3.6%	2.3%	3.8%
	Projected Annual Growth 2018 to 2023	4.7%	3.6%	2.6%	3.7%
	Population per Household	3.0	3.1	2.9	3.1
Ethnic	Hispanic or Latino Population	11%	11%	10%	11%
	Non Hispanic or Latino Population	89%	89%	90%	89%
Race	White	65.8%	63.4%	69.2%	63.6%
	Black or African American	20.8%	21.9%	18.4%	21.8%
	Asian & Pacific Islander	5.5%	6.9%	5.3%	6.7%
	Other Races	7.9%	7.8%	7.1%	7.9%