

Shops on Main Schererville, Indiana	1 Mile Radius	3 Mile Radius	5 Mile Radius	10 Minute Drive
--	---------------	---------------	---------------	-----------------

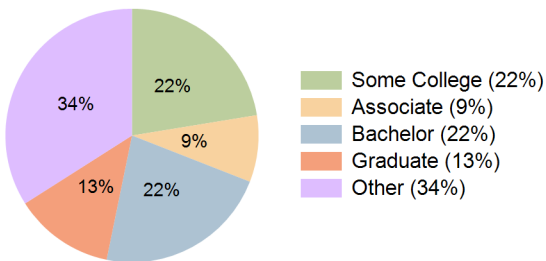
Current Year Demographics

Current Population	5,147	72,409	179,625	53,115
Total Daytime Pop	5,559	69,272	175,984	58,837
Workplace Pop	3,418	31,736	62,774	24,974
Average Household Income	\$102,915	\$100,541	\$90,349	\$102,714
Median Household Income	\$83,666	\$80,479	\$70,171	\$80,508
Total Households	2,304	29,277	68,941	21,713
Median Home Value	\$286,477	\$258,381	\$233,889	\$272,575
Bachelors Degree	26.9%	21.5%	19.5%	22.3%
Graduate Degree	14.5%	12.7%	10.0%	12.8%
Total Consumer Spending/Capita (Weekly)	\$421	\$415	\$405	\$417

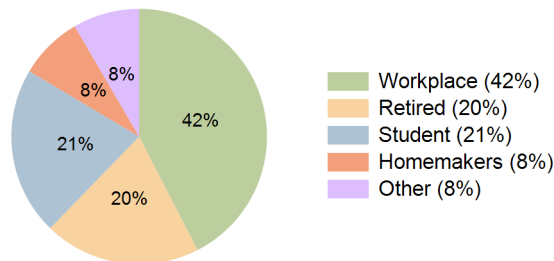
2027 Demographic Projections

Projected Population	5,114	72,211	179,423	53,071
Projected 5 Year Annual Growth Rate (Pop)	-0.1%	-0.1%	0.0%	0.0%
Projected Households	2,290	29,198	68,820	21,692
Projected 5 Year Annual Growth Rate (HH)	-0.1%	-0.1%	0.0%	0.0%

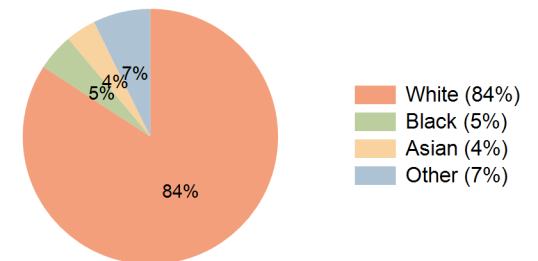
Education (10 Minute Drive)



Daytime Population (10 Minute Drive)

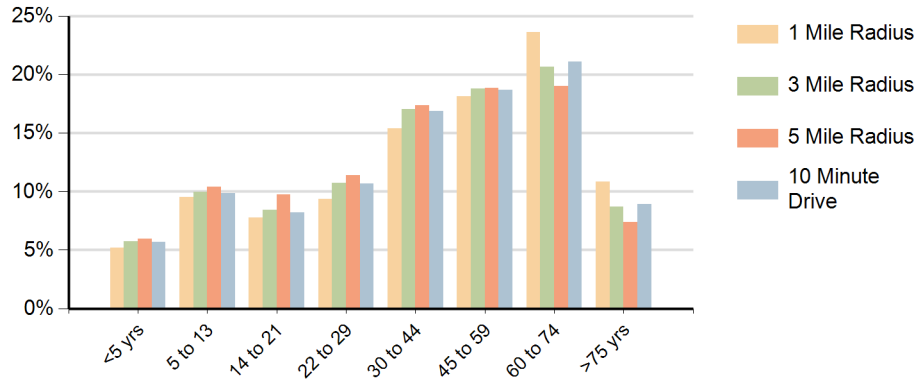


Race (10 Minute Drive)

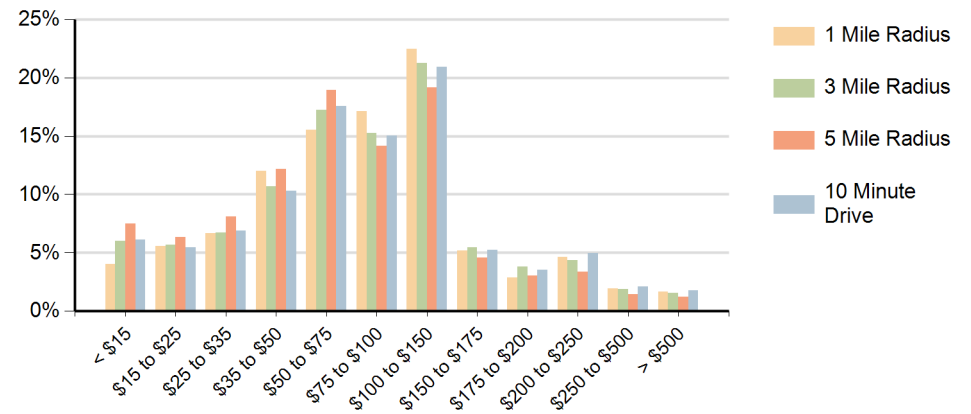


Hispanic Ethnicity
12% Hispanic | 88% Non Hispanic

Population by Age Range



Households by Income Range (\$000)



Shops on Main Scherverville, Indiana		1 Mile Radius	3 Mile Radius	5 Mile Radius	10 Minute Drive
Population	Current Estimated Population	5,147	72,409	179,625	53,115
	2010 Census Population	5,109	71,371	177,478	51,964
	2000 Census Population	4,744	66,255	167,251	47,942
	Historical Annual Growth 2000 to 2010	0.7%	0.7%	0.6%	0.8%
	Estimated Annual Growth 2010 to 2022	0.1%	0.1%	0.1%	0.2%
	Projected Annual Growth 2022 to 2027	-0.1%	-0.1%	0.0%	0.0%
Households	Current Estimated Households	2,304	29,277	68,941	21,713
	2010 Census Households	2,286	28,841	68,242	21,245
	2000 Census Households	2,038	25,729	63,881	18,818
	Historical Annual Growth 2000 to 2010	1.2%	1.1%	0.7%	1.2%
	Estimated Annual Growth 2010 to 2022	0.1%	0.1%	0.1%	0.2%
	Projected Annual Growth 2022 to 2027	-0.1%	-0.1%	0.0%	0.0%
Population per Household		2.2	2.5	2.6	2.4
Ethnic	Hispanic or Latino Population	11%	13%	15%	12%
	Non Hispanic or Latino Population	89%	87%	85%	88%
Race	White	84.7%	84.4%	74.7%	84.2%
	Black or African American	4.5%	4.5%	13.6%	4.7%
	Asian & Pacific Islander	4.1%	3.4%	2.3%	3.8%
	Other Races	6.6%	7.7%	9.4%	7.3%

This report was produced using data from private and government sources deemed to be reliable and is herein provided without representation or warranty.