

**Panther Creek Village Center**  
The Woodlands, Texas

**1 Mile Radius**

**3 Mile Radius**

**5 Mile Radius**

**10 Minute Drive**

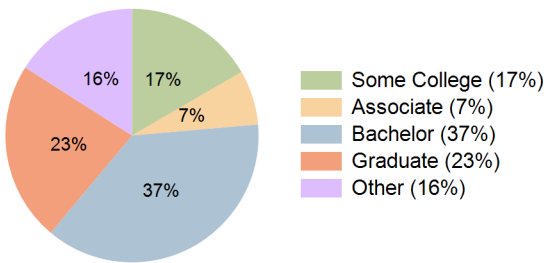
### Current Year Demographics

Current Population	12,974	68,201	187,297	71,722
Total Daytime Pop	14,755	82,439	219,502	99,184
Workplace Pop	6,199	40,677	100,202	50,061
Average Household Income	\$142,133	\$175,705	\$152,991	\$172,161
Median Household Income	\$101,209	\$127,162	\$112,225	\$124,000
Total Households	5,488	26,035	70,521	28,253
Median Home Value	\$387,858	\$455,204	\$401,414	\$436,084
Bachelors Degree	31.9%	37.8%	34.9%	37.5%
Graduate Degree	18.8%	23.6%	20.1%	22.9%
Total Consumer Spending/Capita (Weekly)	\$367	\$377	\$368	\$375

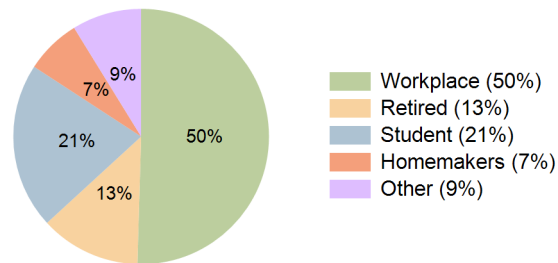
### 2027 Demographic Projections

Projected Population	11,957	72,047	210,290	75,067
Projected 5 Year Annual Growth Rate (Pop)	-1.6%	1.1%	2.3%	0.9%
Projected Households	5,058	27,249	78,595	29,466
Projected 5 Year Annual Growth Rate (HH)	-1.6%	0.9%	2.2%	0.8%

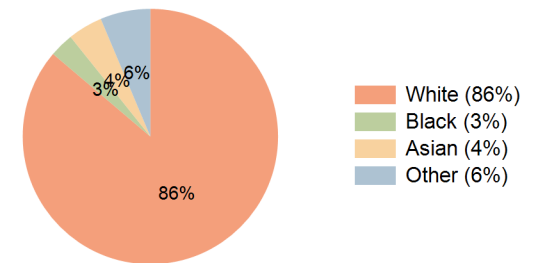
**Education (10 Minute Drive)**



**Daytime Population (10 Minute Drive)**



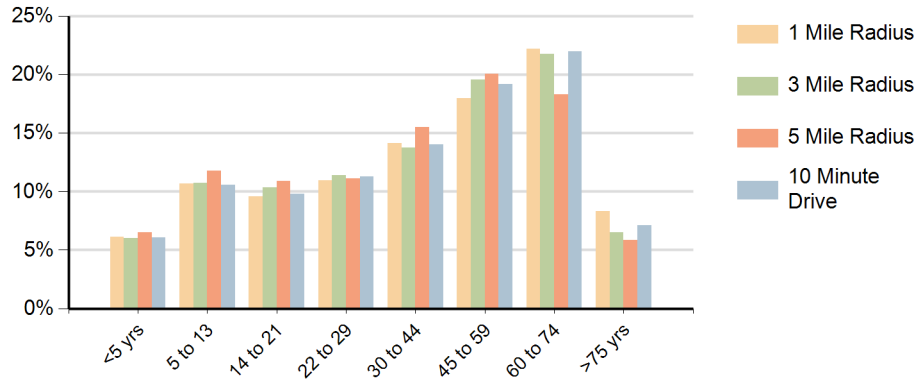
**Race (10 Minute Drive)**



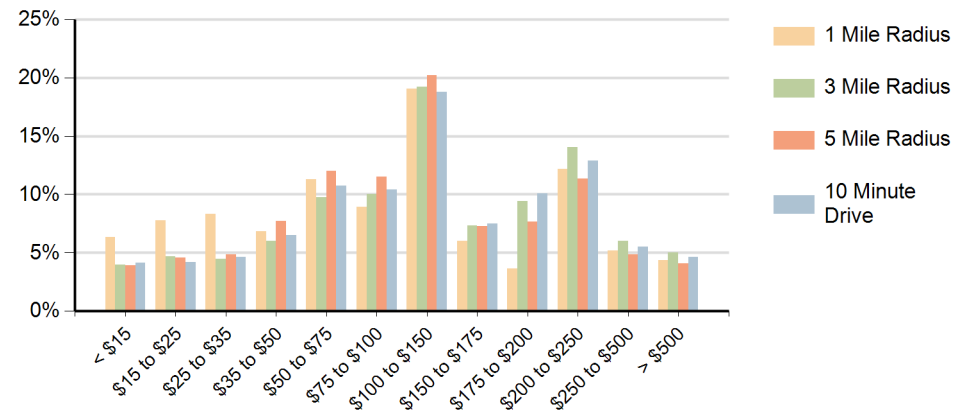
**Hispanic Ethnicity**

15% Hispanic | 85% Non Hispanic

### Population by Age Range



### Households by Income Range (\$000)



Panther Creek Village Center The Woodlands, Texas		1 Mile Radius	3 Mile Radius	5 Mile Radius	10 Minute Drive
Population	Current Estimated Population	12,974	68,201	187,297	71,722
	2010 Census Population	12,743	54,074	130,304	57,409
	2000 Census Population	12,939	46,974	90,090	48,269
	Historical Annual Growth 2000 to 2010	-0.2%	1.4%	3.8%	1.7%
	Estimated Annual Growth 2010 to 2022	0.1%	1.9%	3.0%	1.8%
	Projected Annual Growth 2022 to 2027	-1.6%	1.1%	2.3%	0.9%
Households	Current Estimated Households	5,488	26,035	70,521	28,253
	2010 Census Households	5,340	20,780	49,558	22,570
	2000 Census Households	4,966	16,363	31,751	16,983
	Historical Annual Growth 2000 to 2010	0.7%	2.4%	4.6%	2.9%
	Estimated Annual Growth 2010 to 2022	0.2%	1.9%	2.9%	1.9%
	Projected Annual Growth 2022 to 2027	-1.6%	0.9%	2.2%	0.8%
	Population per Household	2.3	2.6	2.7	2.5
Ethnic	Hispanic or Latino Population	13%	16%	18%	15%
	Non Hispanic or Latino Population	87%	84%	82%	85%
Race	White	89.8%	86.2%	82.2%	86.2%
	Black or African American	2.6%	2.9%	5.0%	3.0%
	Asian & Pacific Islander	2.7%	4.3%	4.9%	4.4%
	Other Races	4.8%	6.6%	7.9%	6.4%