

Sterling Ridge The Woodlands, Texas	1 Mile Radius	3 Mile Radius	5 Mile Radius	10 Minute Drive
--	---------------	---------------	---------------	-----------------

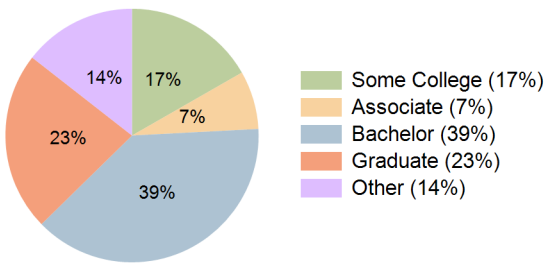
Current Year Demographics

Current Population	7,495	66,166	150,867	97,440
Total Daytime Pop	7,809	60,978	149,101	86,373
Workplace Pop	3,280	19,659	63,398	29,734
Average Household Income	\$194,918	\$154,131	\$145,519	\$151,606
Median Household Income	\$138,785	\$118,688	\$110,618	\$116,163
Total Households	2,582	23,601	54,926	34,716
Median Home Value	\$548,823	\$430,577	\$377,210	\$406,259
Bachelors Degree	39.7%	39.4%	36.2%	38.5%
Graduate Degree	29.5%	24.0%	20.5%	22.9%
Total Consumer Spending/Capita (Weekly)	\$352	\$349	\$345	\$348

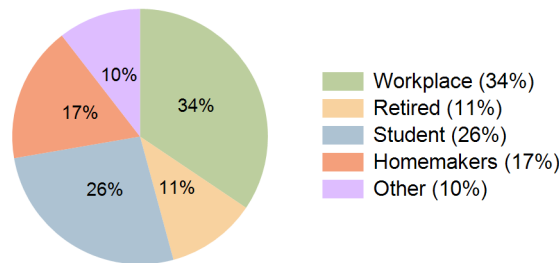
2023 Demographic Projections

Projected Population	7,768	70,463	173,743	109,363
Projected 5 Year Annual Growth Rate (Pop)	0.7%	1.3%	2.9%	2.3%
Projected Households	2,674	25,012	63,019	38,738
Projected 5 Year Annual Growth Rate (HH)	0.7%	1.2%	2.8%	2.2%

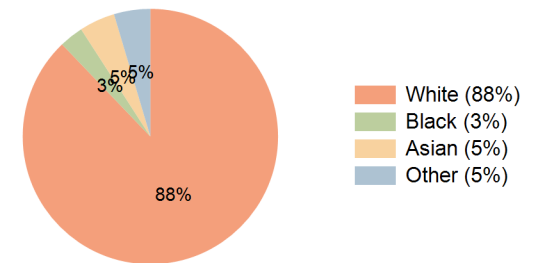
Education (10 Minute Drive)



Daytime Population (10 Minute Drive)



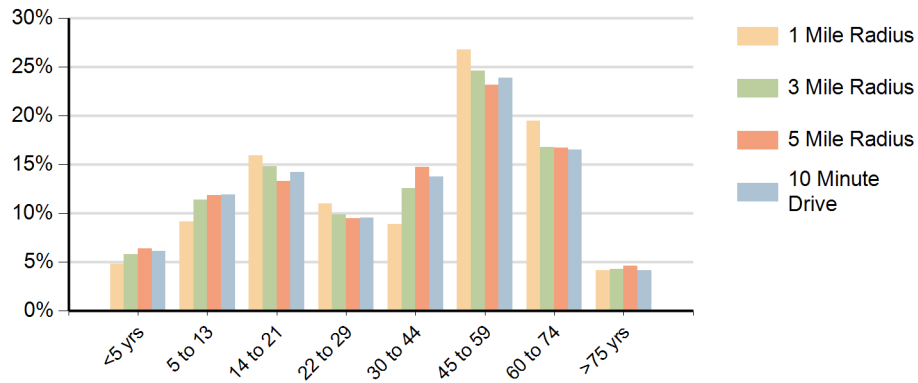
Race (10 Minute Drive)



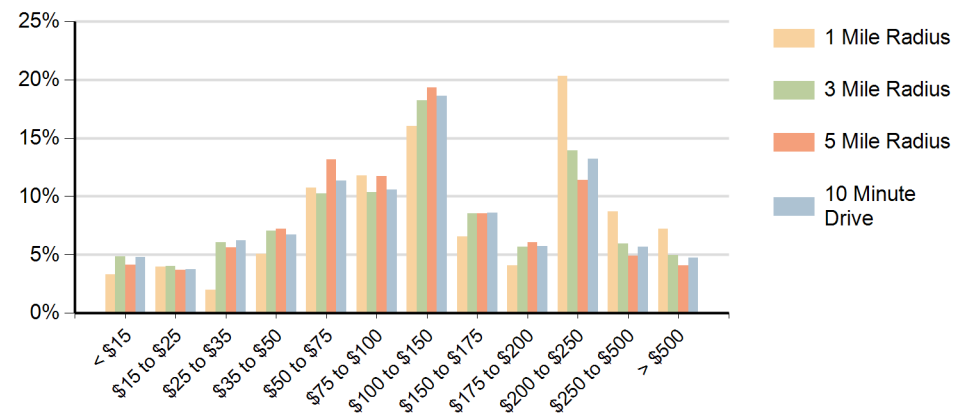
Hispanic Ethnicity

14% Hispanic | 86% Non Hispanic

Population by Age Range



Households by Income Range (\$000)



Sterling Ridge The Woodlands, Texas		1 Mile Radius	3 Mile Radius	5 Mile Radius	10 Minute Drive
Population	Current Estimated Population	7,495	66,166	150,867	97,440
	2010 Census Population	6,901	56,957	114,937	77,432
	2000 Census Population	4,482	40,875	70,889	52,051
	Historical Annual Growth 2000 to 2010	4.4%	3.4%	5.0%	4.1%
	Estimated Annual Growth 2010 to 2018	1.0%	1.8%	3.4%	2.8%
	Projected Annual Growth 2018 to 2023	0.7%	1.3%	2.9%	2.3%
Households	Current Estimated Households	2,582	23,601	54,926	34,716
	2010 Census Households	2,379	20,339	41,938	27,685
	2000 Census Households	1,468	13,785	24,133	17,529
	Historical Annual Growth 2000 to 2010	4.9%	4.0%	5.7%	4.7%
	Estimated Annual Growth 2010 to 2018	1.0%	1.8%	3.3%	2.8%
	Projected Annual Growth 2018 to 2023	0.7%	1.2%	2.8%	2.2%
	Population per Household	2.9	2.8	2.7	2.8
Ethnic	Hispanic or Latino Population	13%	13%	14%	14%
	Non Hispanic or Latino Population	87%	87%	86%	86%
Race	White	90.1%	88.8%	87.8%	87.8%
	Black or African American	1.7%	2.4%	3.0%	3.0%
	Asian & Pacific Islander	5.1%	4.7%	4.1%	4.5%
	Other Races	3.1%	4.1%	5.0%	4.6%