

Phenix Crossing Phenix City, Alabama	1 Mile Radius	3 Mile Radius	5 Mile Radius	10 Minute Drive
---	---------------	---------------	---------------	-----------------

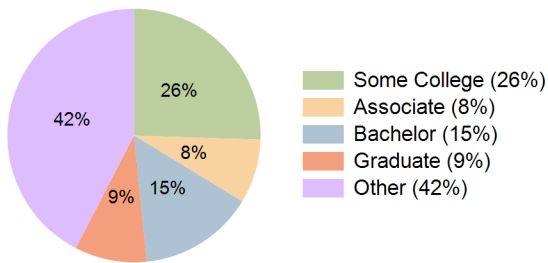
Current Year Demographics

Current Population	3,499	28,363	91,098	68,813
Total Daytime Pop	2,787	31,173	121,338	104,348
Workplace Pop	442	7,859	60,164	53,040
Average Household Income	\$85,316	\$81,606	\$65,161	\$61,619
Median Household Income	\$72,741	\$53,659	\$45,085	\$43,923
Total Households	1,360	11,730	37,069	28,113
Median Home Value	\$215,796	\$146,461	\$136,731	\$132,061
Bachelors Degree	22.1%	17.3%	15.4%	14.7%
Graduate Degree	15.2%	12.7%	9.9%	9.2%
Total Consumer Spending/Capita (Weekly)	\$315	\$301	\$290	\$288

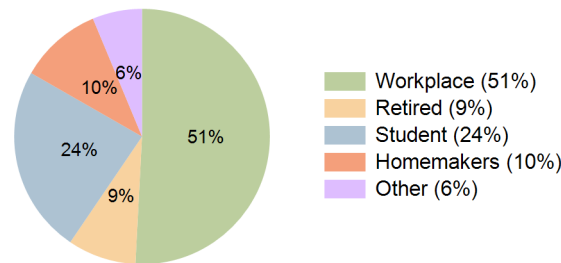
2023 Demographic Projections

Projected Population	3,640	29,029	92,936	70,288
Projected 5 Year Annual Growth Rate (Pop)	0.8%	0.5%	0.4%	0.4%
Projected Households	1,414	11,999	37,784	28,709
Projected 5 Year Annual Growth Rate (HH)	0.8%	0.5%	0.4%	0.4%

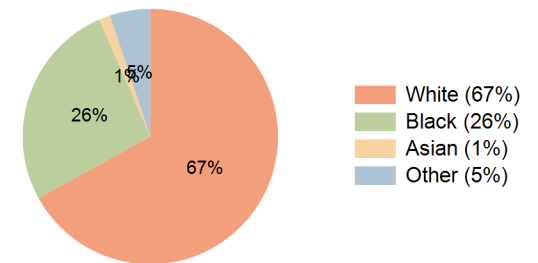
Education (10 Minute Drive)



Daytime Population (10 Minute Drive)

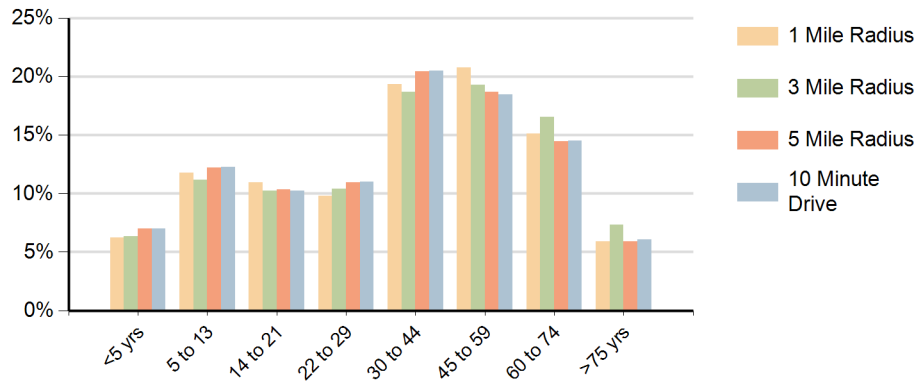


Race (10 Minute Drive)

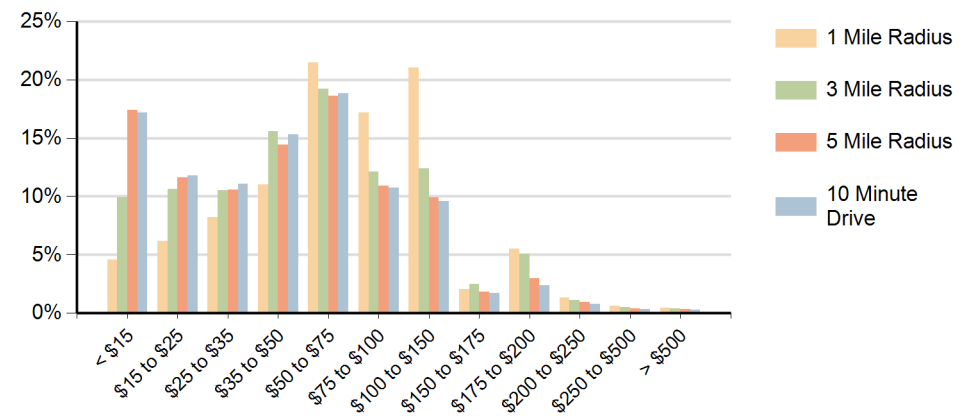


Hispanic Ethnicity
5% Hispanic | 95% Non Hispanic

Population by Age Range



Households by Income Range (\$000)



Phenix Crossing Phenix City, Alabama		1 Mile Radius	3 Mile Radius	5 Mile Radius	10 Minute Drive
Population	Current Estimated Population	3,499	28,363	91,098	68,813
	2010 Census Population	3,033	27,196	88,730	66,839
	2000 Census Population	2,184	23,724	78,257	59,447
	Historical Annual Growth 2000 to 2010	3.3%	1.4%	1.3%	1.2%
	Estimated Annual Growth 2010 to 2018	1.7%	0.5%	0.3%	0.4%
	Projected Annual Growth 2018 to 2023	0.8%	0.5%	0.4%	0.4%
Households	Current Estimated Households	1,360	11,730	37,069	28,113
	2010 Census Households	1,180	11,263	36,227	27,349
	2000 Census Households	831	9,737	32,192	24,446
	Historical Annual Growth 2000 to 2010	3.6%	1.5%	1.2%	1.1%
	Estimated Annual Growth 2010 to 2018	1.7%	0.5%	0.3%	0.3%
	Projected Annual Growth 2018 to 2023	0.8%	0.5%	0.4%	0.4%
	Population per Household	2.6	2.4	2.4	2.4
Ethnic	Hispanic or Latino Population	3%	4%	5%	5%
	Non Hispanic or Latino Population	97%	96%	95%	95%
Race	White	84.5%	77.2%	66.4%	67.0%
	Black or African American	10.6%	17.1%	27.1%	26.4%
	Asian & Pacific Islander	1.6%	1.6%	1.6%	1.4%
	Other Races	3.3%	4.1%	4.9%	5.1%