

**Welleby Plaza**  
Sunrise, Florida

**1 Mile Radius**

**3 Mile Radius**

**5 Mile Radius**

**10 Minute Drive**

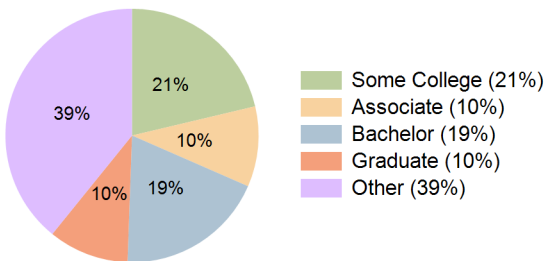
### Current Year Demographics

Current Population	22,951	141,675	350,688	212,391
Total Daytime Pop	15,599	115,496	322,891	204,094
Workplace Pop	5,608	47,985	142,057	94,484
Average Household Income	\$65,861	\$70,546	\$67,995	\$66,245
Median Household Income	\$53,455	\$54,045	\$50,189	\$49,988
Total Households	9,635	58,537	140,717	87,829
Median Home Value	\$229,490	\$297,061	\$287,105	\$283,157
Bachelors Degree	18.0%	20.3%	18.4%	19.0%
Graduate Degree	7.4%	10.5%	10.2%	10.3%
Total Consumer Spending/Capita (Weekly)	\$331	\$337	\$331	\$331

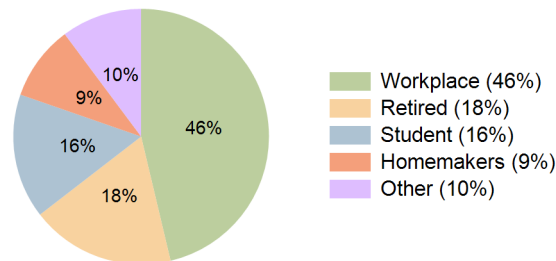
### 2023 Demographic Projections

Projected Population	23,369	144,697	357,719	217,270
Projected 5 Year Annual Growth Rate (Pop)	0.4%	0.4%	0.4%	0.5%
Projected Households	9,796	59,617	143,323	89,582
Projected 5 Year Annual Growth Rate (HH)	0.3%	0.4%	0.4%	0.4%

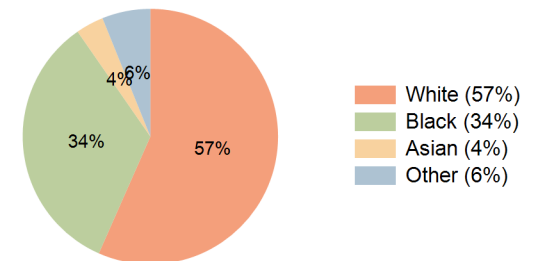
**Education (10 Minute Drive)**



**Daytime Population (10 Minute Drive)**

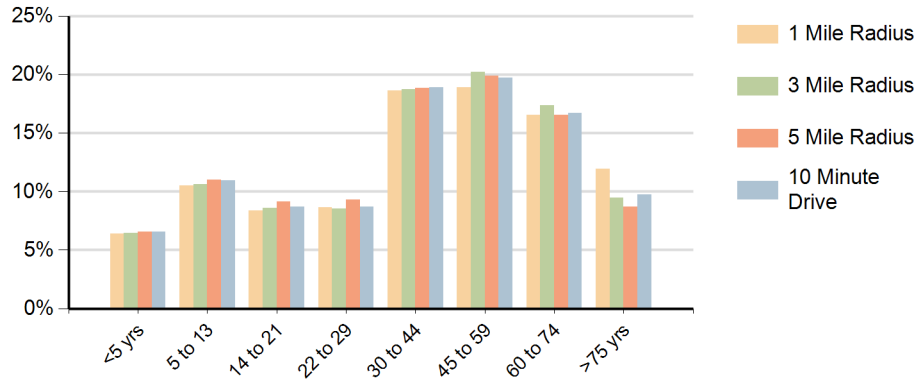


**Race (10 Minute Drive)**

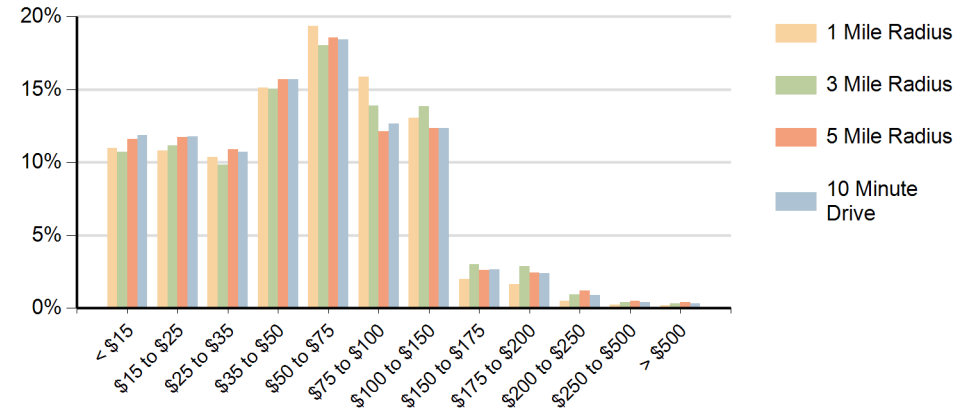


**Hispanic Ethnicity**  
22% Hispanic | 78% Non Hispanic

### Population by Age Range



### Households by Income Range (\$000)



Welleby Plaza Sunrise, Florida		1 Mile Radius	3 Mile Radius	5 Mile Radius	10 Minute Drive
Population	Current Estimated Population	22,951	141,675	350,688	212,391
	2010 Census Population	20,565	128,570	317,446	191,399
	2000 Census Population	21,767	126,341	309,322	186,017
	Historical Annual Growth 2000 to 2010	-0.6%	0.2%	0.3%	0.3%
	Estimated Annual Growth 2010 to 2018	1.3%	1.2%	1.2%	1.3%
	Projected Annual Growth 2018 to 2023	0.4%	0.4%	0.4%	0.5%
Households	Current Estimated Households	9,635	58,537	140,717	87,829
	2010 Census Households	8,625	53,280	127,644	79,493
	2000 Census Households	9,135	53,610	127,403	79,125
	Historical Annual Growth 2000 to 2010	-0.6%	-0.1%	0.0%	0.0%
	Estimated Annual Growth 2010 to 2018	1.4%	1.1%	1.2%	1.2%
	Projected Annual Growth 2018 to 2023	0.3%	0.4%	0.4%	0.4%
	Population per Household	2.4	2.4	2.5	2.4
Ethnic	Hispanic or Latino Population	28%	24%	22%	22%
	Non Hispanic or Latino Population	72%	76%	78%	78%
Race	White	63.8%	61.3%	54.9%	56.6%
	Black or African American	25.1%	28.1%	35.6%	33.7%
	Asian & Pacific Islander	4.1%	4.0%	3.3%	3.5%
	Other Races	7.1%	6.7%	6.3%	6.1%