

**Millhopper Shopping Center**  
Gainesville, Florida

**1 Mile Radius**

**3 Mile Radius**

**5 Mile Radius**

**10 Minute Drive**

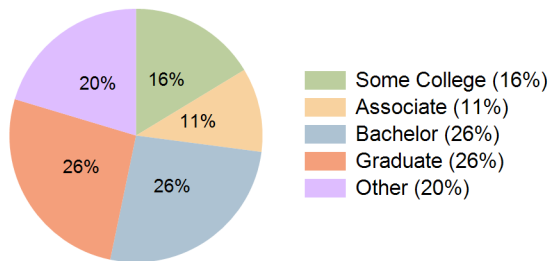
**Current Year Demographics**

Current Population	7,508	80,454	169,252	113,732
Total Daytime Pop	11,921	132,795	291,225	221,662
Workplace Pop	6,564	37,918	90,863	59,404
Average Household Income	\$96,134	\$78,154	\$71,483	\$73,108
Median Household Income	\$69,114	\$53,362	\$48,680	\$49,891
Total Households	3,461	33,852	71,250	48,471
Median Home Value	\$357,672	\$321,331	\$307,514	\$317,391
Bachelors Degree	29.8%	26.3%	26.1%	26.2%
Graduate Degree	30.1%	27.4%	25.5%	26.4%
Total Consumer Spending/Capita (Weekly)	\$350	\$326	\$321	\$323

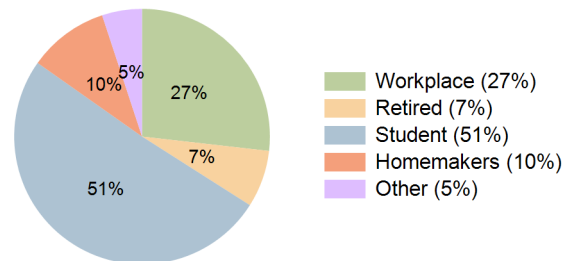
**2027 Demographic Projections**

Projected Population	7,579	82,296	173,103	116,461
Projected 5 Year Annual Growth Rate (Pop)	0.2%	0.5%	0.5%	0.5%
Projected Households	3,490	34,671	72,929	49,655
Projected 5 Year Annual Growth Rate (HH)	0.2%	0.5%	0.5%	0.5%

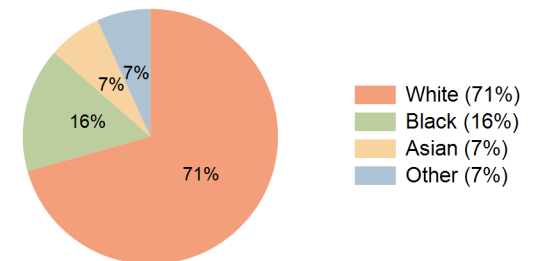
**Education (10 Minute Drive)**



**Daytime Population (10 Minute Drive)**



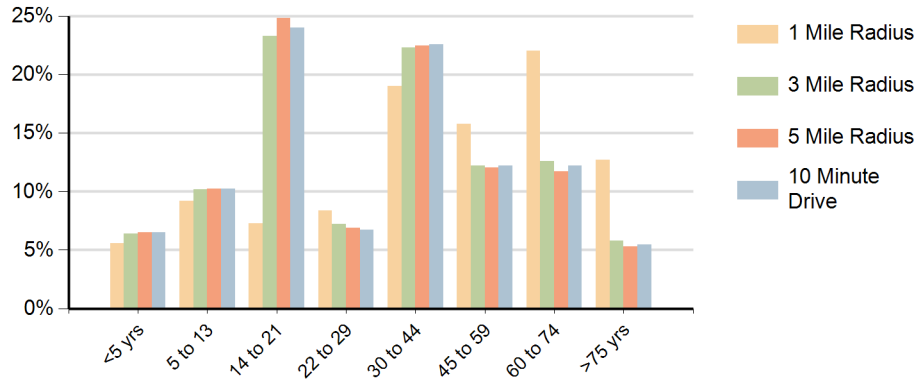
**Race (10 Minute Drive)**



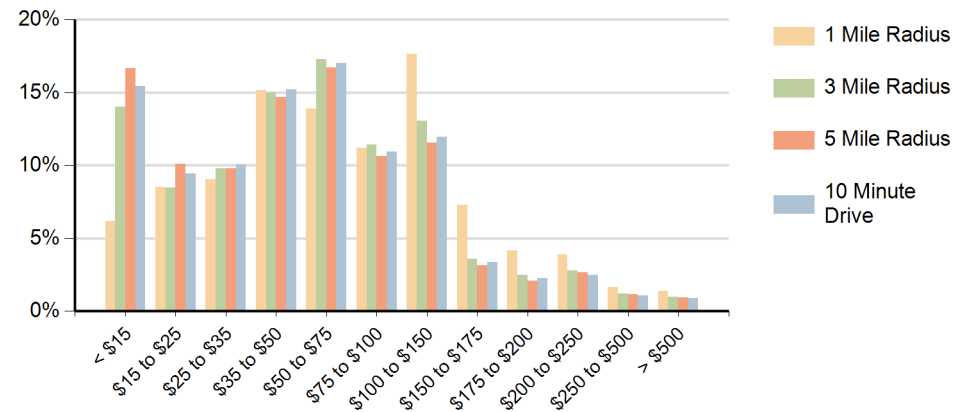
**Hispanic Ethnicity**

12% Hispanic | 88% Non Hispanic

### Population by Age Range



### Households by Income Range (\$000)



Millhopper Shopping Center Gainesville, Florida		1 Mile Radius	3 Mile Radius	5 Mile Radius	10 Minute Drive
Population	Current Estimated Population	7,508	80,454	169,252	113,732
	2010 Census Population	7,261	73,959	155,922	104,340
	2000 Census Population	7,543	62,685	141,604	89,801
	Historical Annual Growth 2000 to 2010	-0.4%	1.7%	1.0%	1.5%
	Estimated Annual Growth 2010 to 2022	0.3%	0.7%	0.7%	0.7%
	Projected Annual Growth 2022 to 2027	0.2%	0.5%	0.5%	0.5%
Households	Current Estimated Households	3,461	33,852	71,250	48,471
	2010 Census Households	3,362	30,942	65,381	44,343
	2000 Census Households	3,233	26,907	59,319	39,081
	Historical Annual Growth 2000 to 2010	0.4%	1.4%	1.0%	1.3%
	Estimated Annual Growth 2010 to 2022	0.2%	0.7%	0.7%	0.7%
	Projected Annual Growth 2022 to 2027	0.2%	0.5%	0.5%	0.5%
	Population per Household	2.2	2.2	2.2	2.2
Ethnic	Hispanic or Latino Population	8%	12%	11%	12%
	Non Hispanic or Latino Population	92%	88%	89%	88%
Race	White	85.6%	72.1%	68.7%	70.6%
	Black or African American	7.0%	15.6%	17.5%	15.8%
	Asian & Pacific Islander	2.0%	5.1%	7.2%	6.8%
	Other Races	5.3%	7.2%	6.6%	6.8%

This report was produced using data from private and government sources deemed to be reliable and is herein provided without representation or warranty.