

Cameron Village Raleigh, North Carolina	1 Mile Radius	3 Mile Radius	5 Mile Radius	10 Minute Drive
--	---------------	---------------	---------------	-----------------

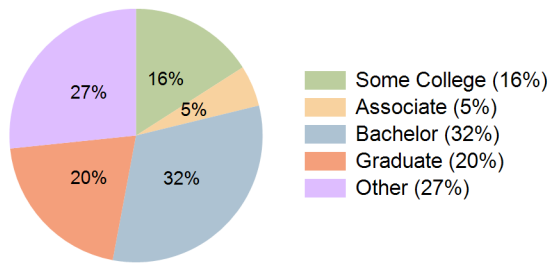
Current Year Demographics

Current Population	15,728	100,317	224,555	129,334
Total Daytime Pop	47,341	219,722	396,274	277,858
Workplace Pop	29,709	102,896	208,526	143,276
Average Household Income	\$93,466	\$91,339	\$83,277	\$92,817
Median Household Income	\$60,007	\$56,287	\$55,388	\$59,165
Total Households	6,730	38,312	90,993	51,520
Median Home Value	\$520,409	\$405,660	\$293,907	\$381,193
Bachelors Degree	40.3%	30.8%	29.0%	31.8%
Graduate Degree	26.3%	20.8%	18.3%	20.4%
Total Consumer Spending/Capita (Weekly)	\$324	\$319	\$316	\$323

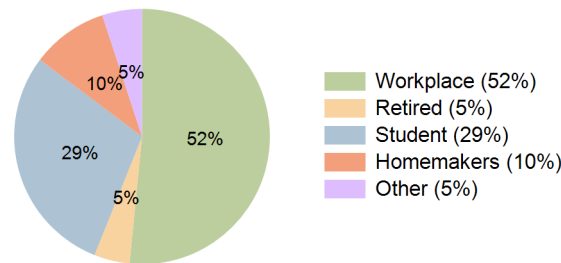
2023 Demographic Projections

Projected Population	15,992	104,494	234,635	135,623
Projected 5 Year Annual Growth Rate (Pop)	0.3%	0.8%	0.9%	1.0%
Projected Households	6,880	40,240	95,611	54,461
Projected 5 Year Annual Growth Rate (HH)	0.4%	1.0%	1.0%	1.1%

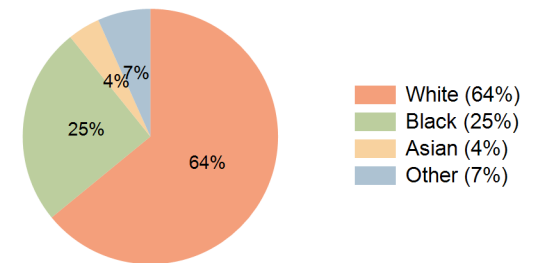
Education (10 Minute Drive)



Daytime Population (10 Minute Drive)

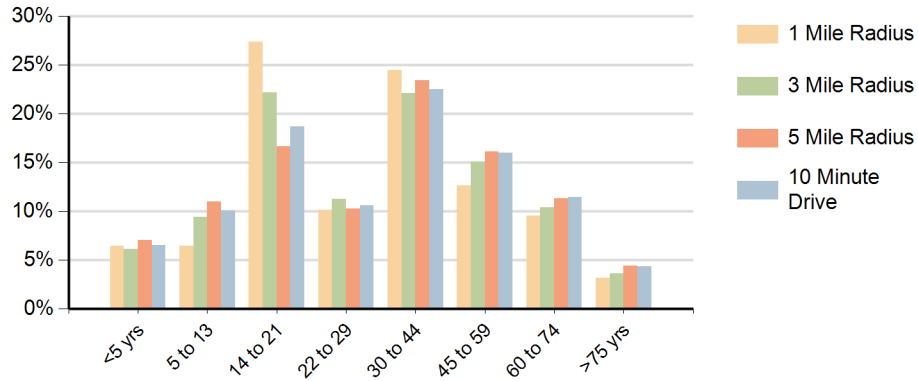


Race (10 Minute Drive)

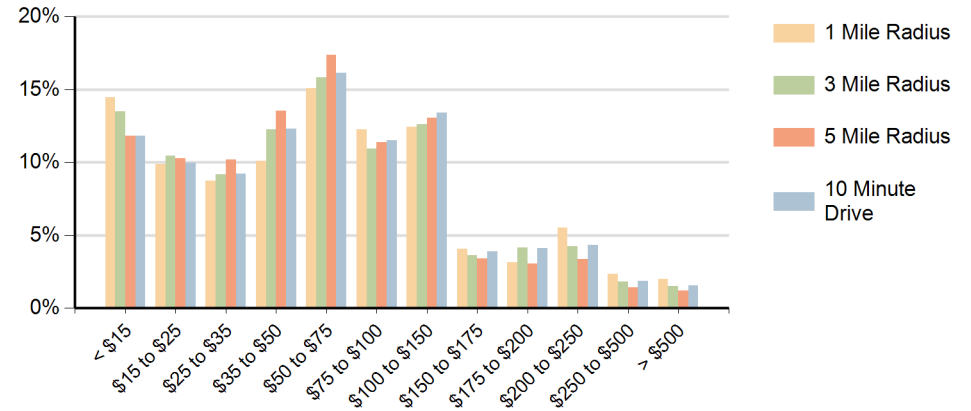


Hispanic Ethnicity
9% Hispanic | 91% Non Hispanic

Population by Age Range



Households by Income Range (\$000)



Cameron Village Raleigh, North Carolina		1 Mile Radius	3 Mile Radius	5 Mile Radius	10 Minute Drive
Population	Current Estimated Population	15,728	100,317	224,555	129,334
	2010 Census Population	14,838	90,409	198,747	113,935
	2000 Census Population	11,855	84,527	173,102	106,029
	Historical Annual Growth 2000 to 2010	2.3%	0.7%	1.4%	0.7%
	Estimated Annual Growth 2010 to 2018	0.7%	1.3%	1.5%	1.5%
	Projected Annual Growth 2018 to 2023	0.3%	0.8%	0.9%	1.0%
Households	Current Estimated Households	6,730	38,312	90,993	51,520
	2010 Census Households	6,215	33,637	79,137	44,219
	2000 Census Households	5,764	32,702	68,976	41,472
	Historical Annual Growth 2000 to 2010	0.8%	0.3%	1.4%	0.6%
	Estimated Annual Growth 2010 to 2018	1.0%	1.6%	1.7%	1.9%
	Projected Annual Growth 2018 to 2023	0.4%	1.0%	1.0%	1.1%
	Population per Household	1.7	2.2	2.3	2.2
Ethnic	Hispanic or Latino Population	3%	7%	11%	9%
	Non Hispanic or Latino Population	97%	93%	89%	91%
Race	White	82.5%	63.5%	58.8%	64.1%
	Black or African American	11.6%	26.2%	29.0%	25.1%
	Asian & Pacific Islander	2.9%	4.5%	4.0%	4.1%
	Other Races	3.0%	5.8%	8.2%	6.7%