

Sweetwater Plaza
Sugar Land, Texas

1 Mile Radius

3 Mile Radius

5 Mile Radius

10 Minute Drive

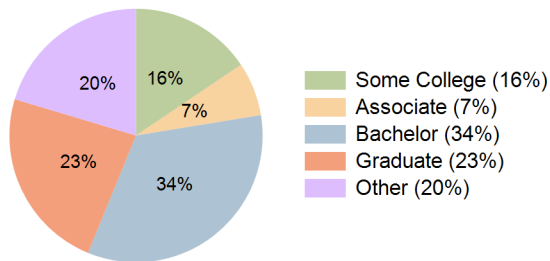
Current Year Demographics

Current Population	9,991	80,113	215,967	152,047
Total Daytime Pop	17,804	84,972	200,666	162,008
Workplace Pop	12,538	37,650	78,050	73,486
Average Household Income	\$138,035	\$167,349	\$141,603	\$145,726
Median Household Income	\$103,990	\$129,533	\$108,589	\$111,359
Total Households	3,622	26,938	70,934	51,326
Median Home Value	\$456,415	\$467,933	\$384,332	\$399,480
Bachelors Degree	30.4%	34.3%	32.2%	33.8%
Graduate Degree	25.8%	28.8%	23.3%	23.4%
Total Consumer Spending/Capita (Weekly)	\$392	\$397	\$384	\$386

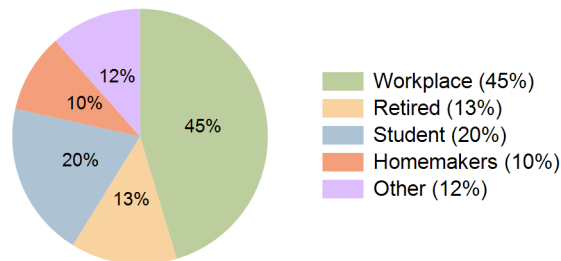
2027 Demographic Projections

Projected Population	9,883	79,522	216,706	150,958
Projected 5 Year Annual Growth Rate (Pop)	-0.2%	-0.1%	0.1%	-0.1%
Projected Households	3,583	26,604	70,884	50,774
Projected 5 Year Annual Growth Rate (HH)	-0.2%	-0.2%	0.0%	-0.2%

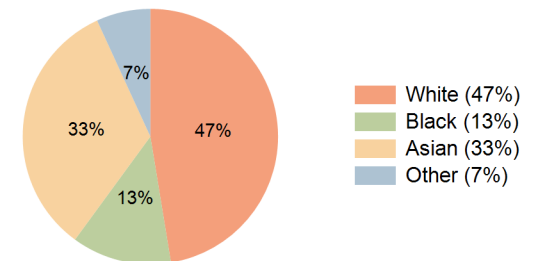
Education (10 Minute Drive)



Daytime Population (10 Minute Drive)

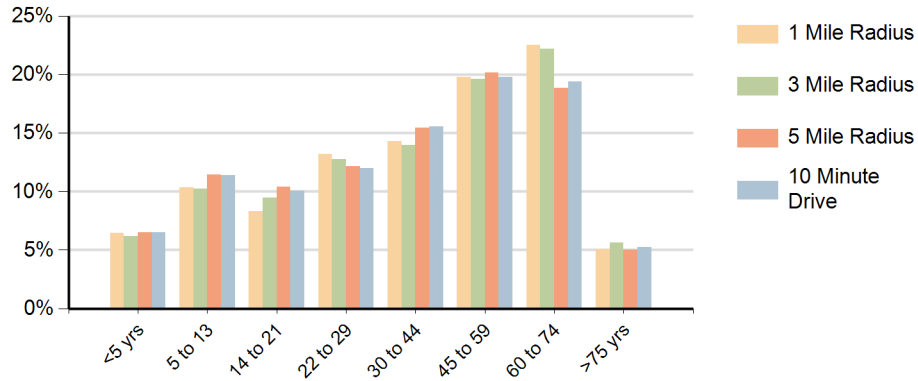


Race (10 Minute Drive)

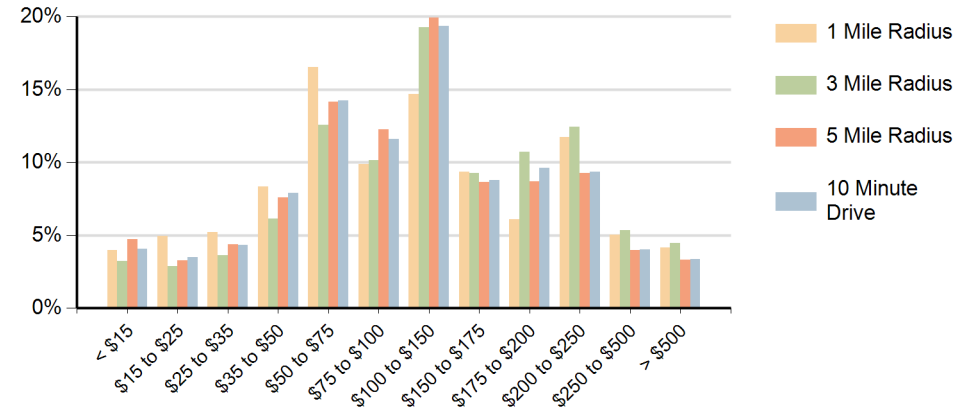


Hispanic Ethnicity
13% Hispanic | 87% Non Hispanic

Population by Age Range



Households by Income Range (\$000)



Sweetwater Plaza Sugar Land, Texas		1 Mile Radius	3 Mile Radius	5 Mile Radius	10 Minute Drive
Population	Current Estimated Population	9,991	80,113	215,967	152,047
	2010 Census Population	8,430	65,407	175,809	127,767
	2000 Census Population	7,130	58,559	128,522	100,319
	Historical Annual Growth 2000 to 2010	1.7%	1.1%	3.2%	2.4%
	Estimated Annual Growth 2010 to 2022	1.4%	1.7%	1.7%	1.4%
	Projected Annual Growth 2022 to 2027	-0.2%	-0.1%	0.1%	-0.1%
Households	Current Estimated Households	3,622	26,938	70,934	51,326
	2010 Census Households	3,048	22,302	58,241	43,412
	2000 Census Households	2,202	18,220	40,984	32,354
	Historical Annual Growth 2000 to 2010	3.3%	2.0%	3.6%	3.0%
	Estimated Annual Growth 2010 to 2022	1.4%	1.6%	1.6%	1.4%
	Projected Annual Growth 2022 to 2027	-0.2%	-0.2%	0.0%	-0.2%
	Population per Household	2.8	3.0	3.0	2.9
Ethnic	Hispanic or Latino Population	7%	10%	14%	13%
	Non Hispanic or Latino Population	93%	90%	86%	87%
Race	White	39.3%	47.9%	45.6%	47.4%
	Black or African American	4.5%	6.4%	13.0%	12.6%
	Asian & Pacific Islander	52.0%	40.1%	34.3%	33.1%
	Other Races	4.2%	5.7%	7.1%	6.8%