

Crossroads Commons Boulder, Colorado	1 Mile Radius	3 Mile Radius	5 Mile Radius	10 Minute Drive
---	---------------	---------------	---------------	-----------------

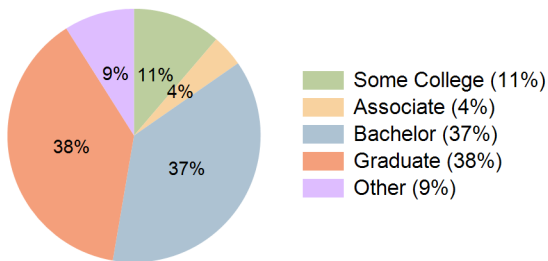
### Current Year Demographics

Current Population	17,100	93,494	118,652	98,133
Total Daytime Pop	46,076	175,879	201,428	184,672
Workplace Pop	27,970	69,625	80,484	74,846
Average Household Income	\$90,942	\$123,501	\$129,743	\$123,144
Median Household Income	\$59,740	\$76,930	\$85,165	\$77,779
Total Households	8,630	39,712	50,743	41,875
Median Home Value	\$580,511	\$914,979	\$913,717	\$897,159
Bachelors Degree	39.9%	37.4%	36.9%	37.3%
Graduate Degree	31.2%	38.9%	39.3%	38.3%
Total Consumer Spending/Capita (Weekly)	\$351	\$367	\$374	\$368

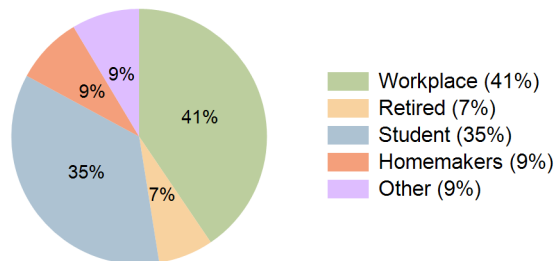
### 2027 Demographic Projections

Projected Population	17,270	93,644	119,037	98,306
Projected 5 Year Annual Growth Rate (Pop)	0.2%	0.0%	0.1%	0.0%
Projected Households	8,726	39,790	50,924	41,963
Projected 5 Year Annual Growth Rate (HH)	0.2%	0.0%	0.1%	0.0%

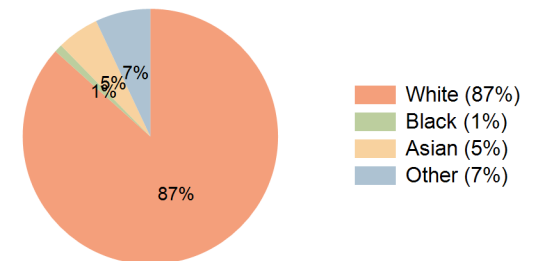
Education (10 Minute Drive)



Daytime Population (10 Minute Drive)

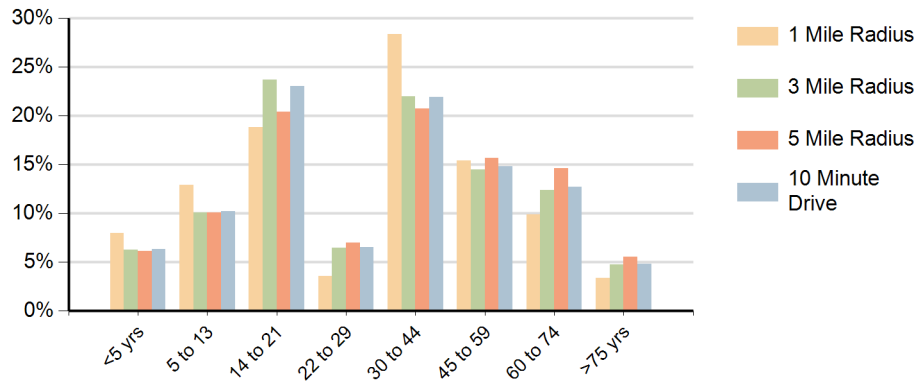


Race (10 Minute Drive)

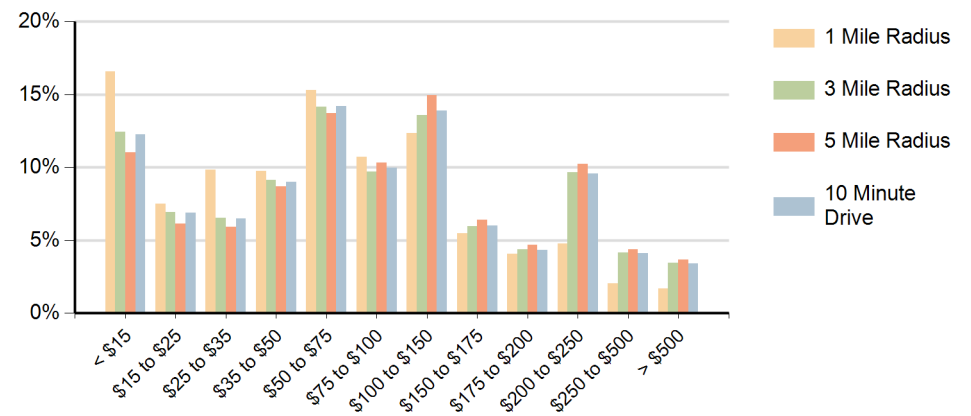


**Hispanic Ethnicity**  
10% Hispanic | 90% Non Hispanic

### Population by Age Range



### Households by Income Range (\$000)



Crossroads Commons Boulder, Colorado		1 Mile Radius	3 Mile Radius	5 Mile Radius	10 Minute Drive
Population	Current Estimated Population	17,100	93,494	118,652	98,133
	2010 Census Population	16,223	90,088	113,983	94,620
	2000 Census Population	18,034	87,961	111,761	92,092
	Historical Annual Growth 2000 to 2010	-1.1%	0.2%	0.2%	0.3%
	Estimated Annual Growth 2010 to 2022	0.4%	0.3%	0.3%	0.3%
	Projected Annual Growth 2022 to 2027	0.2%	0.0%	0.1%	0.0%
Households	Current Estimated Households	8,630	39,712	50,743	41,875
	2010 Census Households	8,192	38,128	48,620	40,243
	2000 Census Households	8,098	36,613	46,618	38,499
	Historical Annual Growth 2000 to 2010	0.1%	0.4%	0.4%	0.4%
	Estimated Annual Growth 2010 to 2022	0.4%	0.3%	0.3%	0.3%
	Projected Annual Growth 2022 to 2027	0.2%	0.0%	0.1%	0.0%
	Population per Household	1.9	2.2	2.2	2.2
Ethnic	Hispanic or Latino Population	13%	11%	9%	10%
	Non Hispanic or Latino Population	87%	89%	91%	90%
Race	White	83.9%	86.4%	87.6%	86.6%
	Black or African American	1.2%	1.0%	0.9%	1.0%
	Asian & Pacific Islander	6.1%	5.5%	5.0%	5.4%
	Other Races	8.8%	7.1%	6.4%	7.0%