

| Regency Commons Blue Ash, Ohio | 1 Mile Radius | 3 Mile Radius | 5 Mile Radius | 10 Minute Drive |
|-----------------------------------|---------------|---------------|---------------|-----------------|
|-----------------------------------|---------------|---------------|---------------|-----------------|

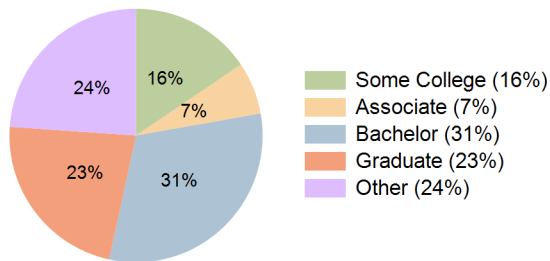
Current Year Demographics

| | | | | |
|---|-----------|-----------|-----------|-----------|
| Current Population | 3,088 | 46,066 | 139,898 | 104,664 |
| Total Daytime Pop | 19,221 | 106,849 | 256,244 | 214,058 |
| Workplace Pop | 17,201 | 77,568 | 174,716 | 152,812 |
| Average Household Income | \$89,828 | \$106,460 | \$102,574 | \$107,598 |
| Median Household Income | \$63,224 | \$78,541 | \$73,095 | \$77,685 |
| Total Households | 1,291 | 18,837 | 56,154 | 42,265 |
| Median Home Value | \$231,679 | \$272,834 | \$240,970 | \$273,139 |
| Bachelors Degree | 21.2% | 30.6% | 28.5% | 31.2% |
| Graduate Degree | 18.7% | 21.8% | 20.3% | 22.7% |
| Total Consumer Spending/Capita (Weekly) | \$319 | \$338 | \$331 | \$335 |

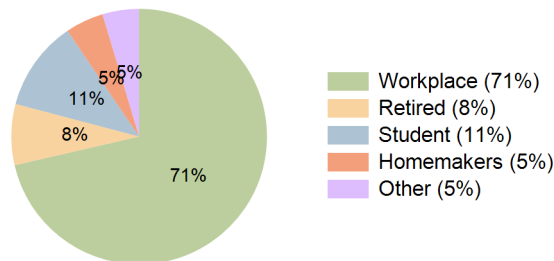
2023 Demographic Projections

| | | | | |
|---|-------|--------|---------|---------|
| Projected Population | 3,048 | 46,083 | 140,071 | 104,925 |
| Projected 5 Year Annual Growth Rate (Pop) | -0.3% | 0.0% | 0.0% | 0.0% |
| Projected Households | 1,276 | 18,838 | 56,161 | 42,337 |
| Projected 5 Year Annual Growth Rate (HH) | -0.2% | 0.0% | 0.0% | 0.0% |

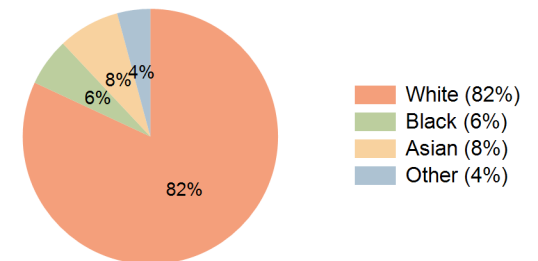
Education (10 Minute Drive)



Daytime Population (10 Minute Drive)

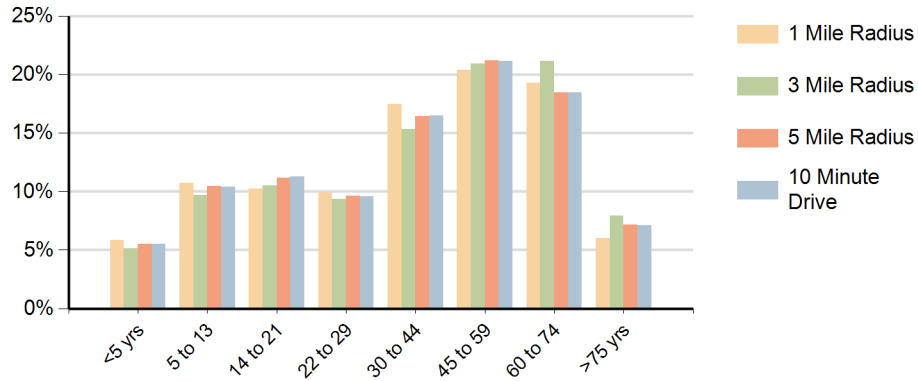


Race (10 Minute Drive)

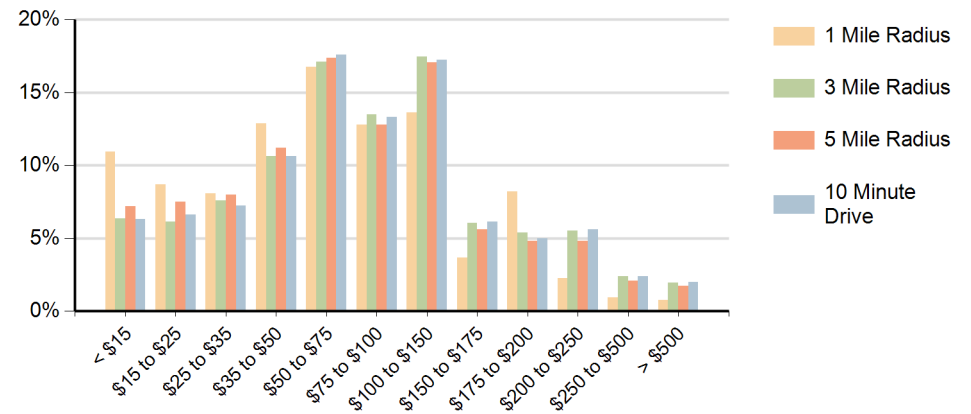


Hispanic Ethnicity
5% Hispanic | 95% Non Hispanic

Population by Age Range



Households by Income Range (\$000)



| Regency Commons Blue Ash, Ohio | | 1 Mile Radius | 3 Mile Radius | 5 Mile Radius | 10 Minute Drive |
|-----------------------------------|---------------------------------------|---------------|---------------|---------------|-----------------|
| Population | Current Estimated Population | 3,088 | 46,066 | 139,898 | 104,664 |
| | 2010 Census Population | 3,148 | 45,083 | 135,820 | 100,822 |
| | 2000 Census Population | 3,042 | 46,801 | 133,713 | 96,420 |
| | Historical Annual Growth 2000 to 2010 | 0.3% | -0.4% | 0.2% | 0.4% |
| | Estimated Annual Growth 2010 to 2018 | -0.2% | 0.3% | 0.4% | 0.5% |
| | Projected Annual Growth 2018 to 2023 | -0.3% | 0.0% | 0.0% | 0.0% |
| Households | Current Estimated Households | 1,291 | 18,837 | 56,154 | 42,265 |
| | 2010 Census Households | 1,313 | 18,428 | 54,555 | 40,742 |
| | 2000 Census Households | 1,247 | 18,244 | 51,971 | 37,426 |
| | Historical Annual Growth 2000 to 2010 | 0.5% | 0.1% | 0.5% | 0.9% |
| | Estimated Annual Growth 2010 to 2018 | -0.2% | 0.3% | 0.4% | 0.4% |
| | Projected Annual Growth 2018 to 2023 | -0.2% | 0.0% | 0.0% | 0.0% |
| | Population per Household | 2.4 | 2.4 | 2.5 | 2.5 |
| Ethnic | Hispanic or Latino Population | 4% | 4% | 4% | 5% |
| | Non Hispanic or Latino Population | 96% | 96% | 96% | 95% |
| Race | White | 73.4% | 83.4% | 81.6% | 81.9% |
| | Black or African American | 14.8% | 6.1% | 8.1% | 6.1% |
| | Asian & Pacific Islander | 7.0% | 6.6% | 6.6% | 7.8% |
| | Other Races | 4.8% | 3.9% | 3.8% | 4.2% |