

Peartree Village Brentwood, Tennessee	1 Mile Radius	3 Mile Radius	5 Mile Radius	10 Minute Drive
--	---------------	---------------	---------------	-----------------

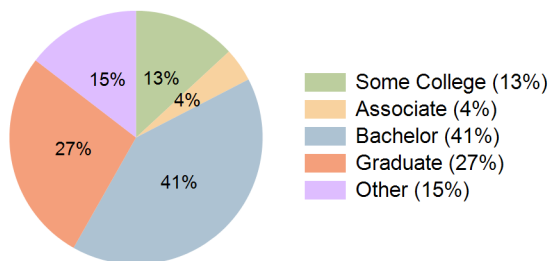
Current Year Demographics

Current Population	5,770	34,018	115,474	51,370
Total Daytime Pop	23,246	47,508	115,945	71,631
Workplace Pop	17,766	28,887	54,481	43,570
Average Household Income	\$164,545	\$171,136	\$150,945	\$152,585
Median Household Income	\$107,498	\$118,884	\$101,704	\$101,897
Total Households	2,570	13,886	46,062	21,453
Median Home Value	\$747,399	\$732,975	\$654,364	\$663,840
Bachelors Degree	41.2%	43.7%	38.6%	40.8%
Graduate Degree	31.5%	30.1%	26.2%	27.2%
Total Consumer Spending/Capita (Weekly)	\$371	\$373	\$361	\$362

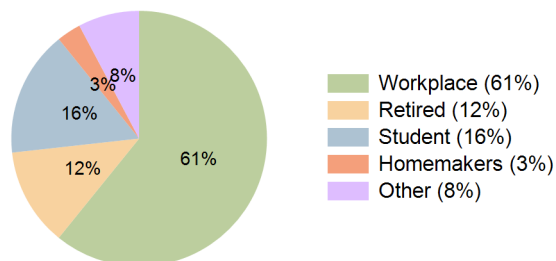
2027 Demographic Projections

Projected Population	5,956	34,271	116,189	51,635
Projected 5 Year Annual Growth Rate (Pop)	0.6%	0.1%	0.1%	0.1%
Projected Households	2,655	13,990	46,358	21,571
Projected 5 Year Annual Growth Rate (HH)	0.7%	0.1%	0.1%	0.1%

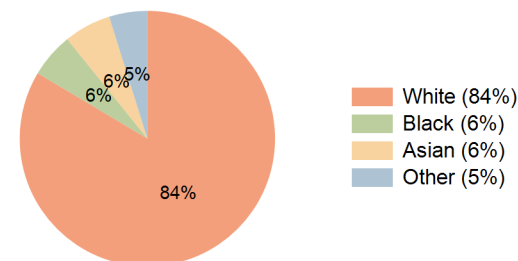
Education (10 Minute Drive)



Daytime Population (10 Minute Drive)

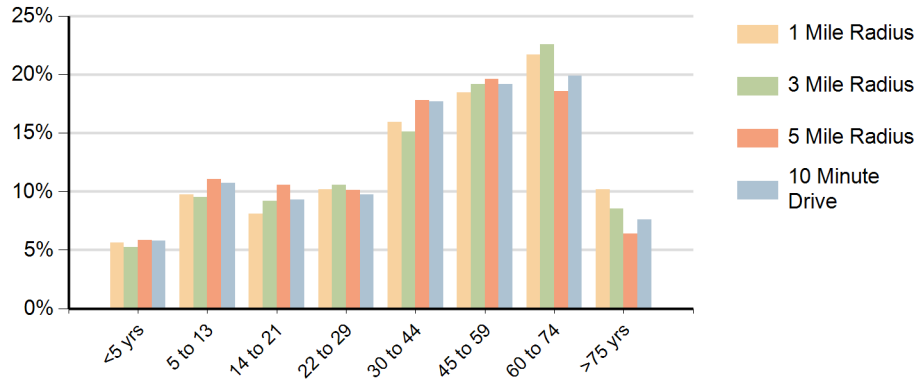


Race (10 Minute Drive)

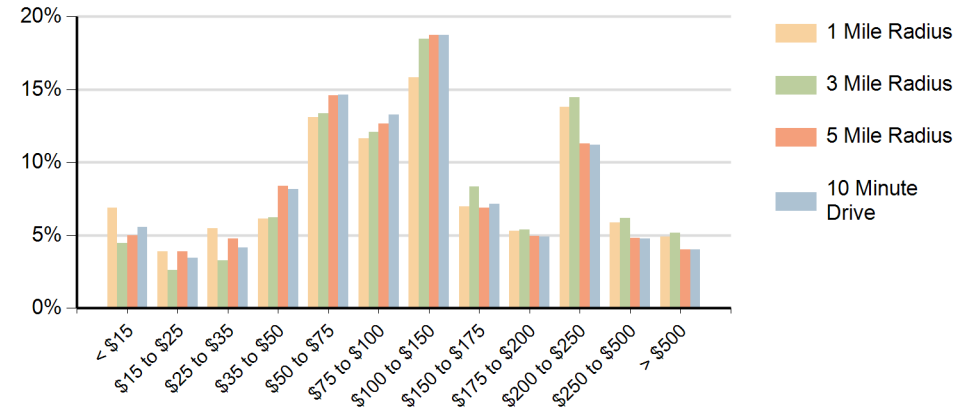


Hispanic Ethnicity
6% Hispanic | 94% Non Hispanic

Population by Age Range



Households by Income Range (\$000)



Peartree Village Brentwood, Tennessee		1 Mile Radius	3 Mile Radius	5 Mile Radius	10 Minute Drive
Population	Current Estimated Population	5,770	34,018	115,474	51,370
	2010 Census Population	4,603	30,237	103,478	46,375
	2000 Census Population	3,964	25,867	86,504	41,014
	Historical Annual Growth 2000 to 2010	1.5%	1.6%	1.8%	1.2%
	Estimated Annual Growth 2010 to 2022	1.9%	1.0%	0.9%	0.8%
	Projected Annual Growth 2022 to 2027	0.6%	0.1%	0.1%	0.1%
Households	Current Estimated Households	2,570	13,886	46,062	21,453
	2010 Census Households	2,065	12,428	41,426	19,460
	2000 Census Households	1,773	10,261	35,392	17,148
	Historical Annual Growth 2000 to 2010	1.5%	1.9%	1.6%	1.3%
	Estimated Annual Growth 2010 to 2022	1.8%	0.9%	0.9%	0.8%
	Projected Annual Growth 2022 to 2027	0.7%	0.1%	0.1%	0.1%
	Population per Household	2.2	2.4	2.5	2.4
Ethnic	Hispanic or Latino Population	4%	3%	8%	6%
	Non Hispanic or Latino Population	96%	97%	92%	94%
Race	White	89.7%	86.5%	80.4%	83.5%
	Black or African American	3.5%	4.9%	7.8%	5.7%
	Asian & Pacific Islander	3.4%	4.8%	6.0%	6.0%
	Other Races	3.4%	3.8%	5.8%	4.8%