

Cornerstone Square
Sandy Springs, Georgia

1 Mile Radius

3 Mile Radius

5 Mile Radius

10 Minute Drive

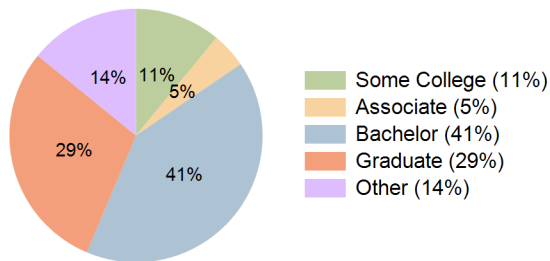
Current Year Demographics

Current Population	9,717	93,909	219,411	150,078
Total Daytime Pop	27,138	168,879	329,809	252,689
Workplace Pop	20,811	111,343	197,465	165,088
Average Household Income	\$135,029	\$143,851	\$157,014	\$142,391
Median Household Income	\$93,808	\$97,509	\$105,117	\$93,919
Total Households	4,752	43,018	97,794	69,740
Median Home Value	\$661,656	\$695,837	\$709,962	\$693,359
Bachelors Degree	40.2%	39.5%	41.7%	40.9%
Graduate Degree	31.2%	31.5%	30.7%	29.5%
Total Consumer Spending/Capita (Weekly)	\$378	\$378	\$384	\$378

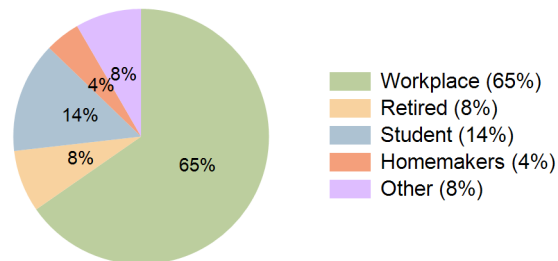
2027 Demographic Projections

Projected Population	11,330	102,672	232,829	161,029
Projected 5 Year Annual Growth Rate (Pop)	3.1%	1.8%	1.2%	1.4%
Projected Households	5,555	47,185	104,118	74,982
Projected 5 Year Annual Growth Rate (HH)	3.2%	1.9%	1.3%	1.5%

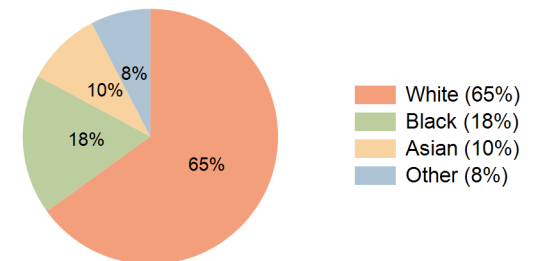
Education (10 Minute Drive)



Daytime Population (10 Minute Drive)



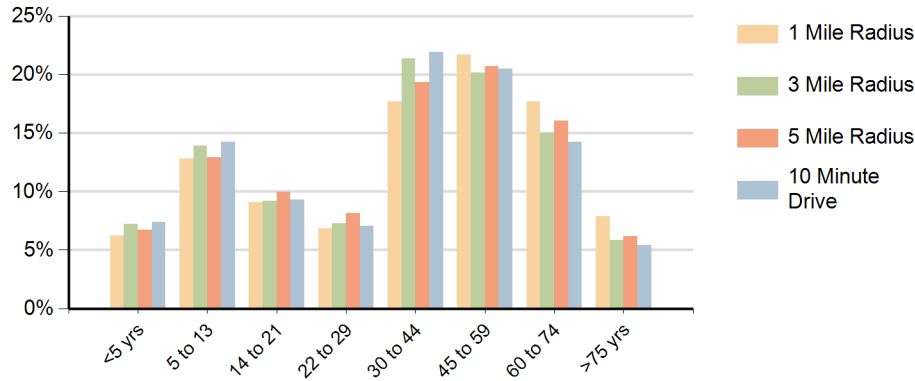
Race (10 Minute Drive)



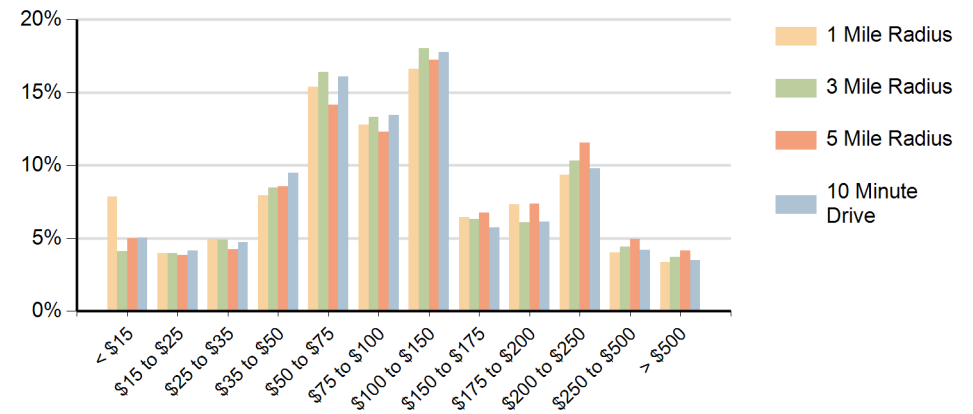
Hispanic Ethnicity

11% Hispanic | 89% Non Hispanic

Population by Age Range



Households by Income Range (\$000)



Cornerstone Square Sandy Springs, Georgia		1 Mile Radius	3 Mile Radius	5 Mile Radius	10 Minute Drive
Population	Current Estimated Population	9,717	93,909	219,411	150,078
	2010 Census Population	6,908	77,511	192,620	129,553
	2000 Census Population	6,178	66,879	172,788	111,645
	Historical Annual Growth 2000 to 2010	1.1%	1.5%	1.1%	1.5%
	Estimated Annual Growth 2010 to 2022	2.8%	1.6%	1.1%	1.2%
	Projected Annual Growth 2022 to 2027	3.1%	1.8%	1.2%	1.4%
Households	Current Estimated Households	4,752	43,018	97,794	69,740
	2010 Census Households	3,339	35,276	85,203	59,981
	2000 Census Households	2,978	30,016	75,832	51,538
	Historical Annual Growth 2000 to 2010	1.2%	1.6%	1.2%	1.5%
	Estimated Annual Growth 2010 to 2022	2.9%	1.6%	1.1%	1.2%
	Projected Annual Growth 2022 to 2027	3.2%	1.9%	1.3%	1.5%
	Population per Household	2.0	2.2	2.2	2.1
Ethnic	Hispanic or Latino Population	10%	12%	9%	11%
	Non Hispanic or Latino Population	90%	88%	91%	89%
Race	White	80.0%	66.6%	70.4%	65.0%
	Black or African American	10.3%	15.3%	14.4%	17.8%
	Asian & Pacific Islander	4.4%	10.5%	8.8%	9.6%
	Other Races	5.3%	7.6%	6.4%	7.6%