

El Cerrito Plaza
El Cerrito, California

1 Mile Radius

3 Mile Radius

5 Mile Radius

10 Minute Drive

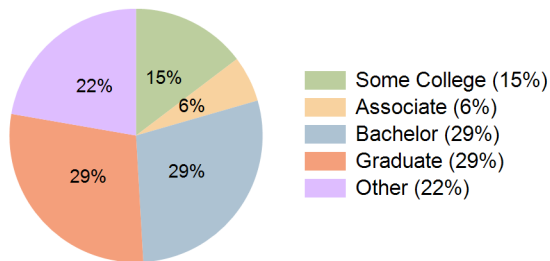
Current Year Demographics

Current Population	28,311	141,388	323,656	144,925
Total Daytime Pop	26,867	192,550	377,926	140,333
Workplace Pop	9,324	60,697	135,124	59,735
Average Household Income	\$148,067	\$143,052	\$135,081	\$137,154
Median Household Income	\$114,811	\$102,743	\$96,626	\$100,934
Total Households	12,061	60,135	128,674	59,493
Median Home Value	\$1,457,607	\$1,429,571	\$1,183,059	\$1,235,344
Bachelors Degree	33.3%	32.0%	28.8%	28.5%
Graduate Degree	35.1%	34.8%	27.2%	28.7%
Total Consumer Spending/Capita (Weekly)	\$462	\$449	\$440	\$447

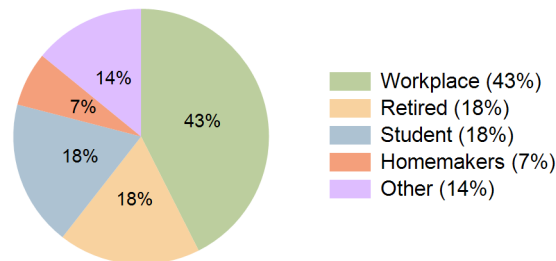
2027 Demographic Projections

Projected Population	28,259	141,556	325,707	146,015
Projected 5 Year Annual Growth Rate (Pop)	0.0%	0.0%	0.1%	0.2%
Projected Households	12,040	60,163	129,461	59,951
Projected 5 Year Annual Growth Rate (HH)	0.0%	0.0%	0.1%	0.2%

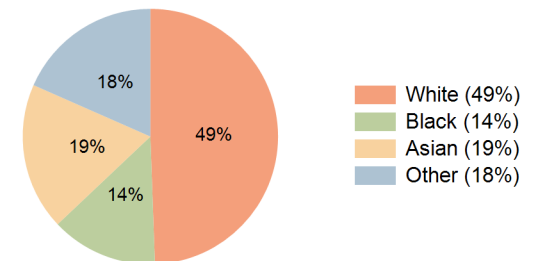
Education (10 Minute Drive)



Daytime Population (10 Minute Drive)

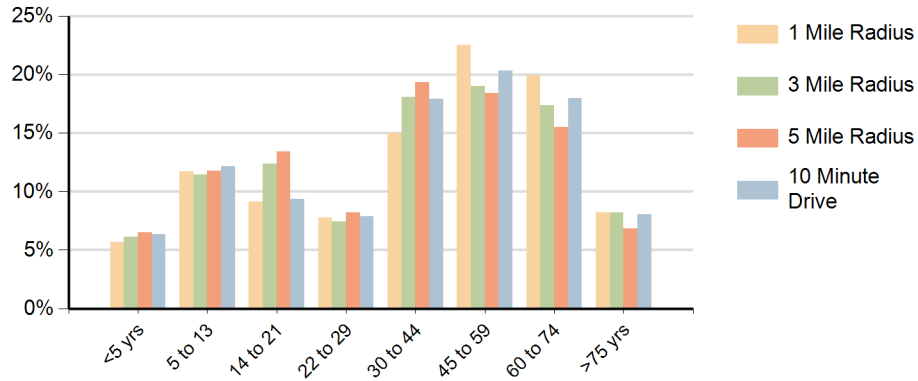


Race (10 Minute Drive)

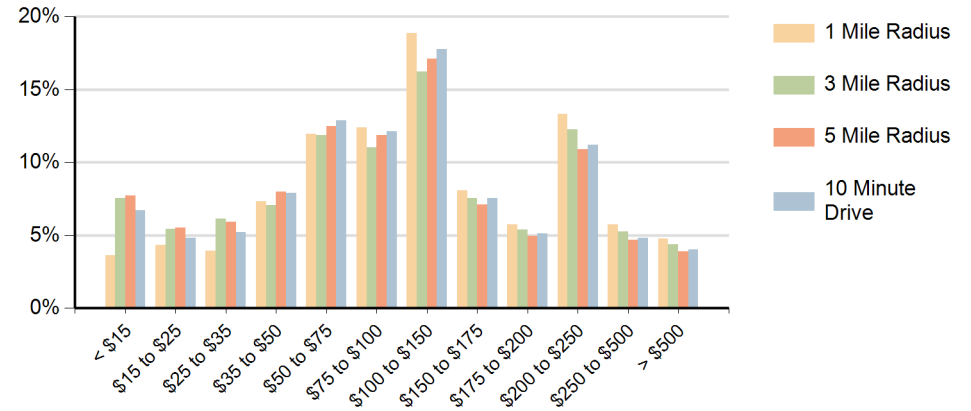


Hispanic Ethnicity
21% Hispanic | 79% Non Hispanic

Population by Age Range



Households by Income Range (\$000)



El Cerrito Plaza El Cerrito, California		1 Mile Radius	3 Mile Radius	5 Mile Radius	10 Minute Drive
Population	Current Estimated Population	28,311	141,388	323,656	144,925
	2010 Census Population	27,936	137,279	310,935	139,305
	2000 Census Population	26,867	130,434	297,033	135,250
	Historical Annual Growth 2000 to 2010	0.4%	0.5%	0.5%	0.3%
	Estimated Annual Growth 2010 to 2022	0.1%	0.2%	0.3%	0.3%
	Projected Annual Growth 2022 to 2027	0.0%	0.0%	0.1%	0.2%
Households	Current Estimated Households	12,061	60,135	128,674	59,493
	2010 Census Households	11,909	58,335	123,243	57,091
	2000 Census Households	12,182	57,238	120,695	56,005
	Historical Annual Growth 2000 to 2010	-0.2%	0.2%	0.2%	0.2%
	Estimated Annual Growth 2010 to 2022	0.1%	0.2%	0.4%	0.3%
	Projected Annual Growth 2022 to 2027	0.0%	0.0%	0.1%	0.2%
	Population per Household	2.3	2.3	2.4	2.4
Ethnic	Hispanic or Latino Population	12%	13%	23%	21%
	Non Hispanic or Latino Population	88%	87%	77%	79%
Race	White	55.0%	55.1%	49.6%	49.4%
	Black or African American	4.3%	10.1%	13.5%	13.5%
	Asian & Pacific Islander	26.4%	20.8%	17.8%	18.7%
	Other Races	14.2%	13.9%	19.1%	18.4%