

Shoppes at Bartram Park
Jacksonville, Florida

1 Mile Radius

3 Mile Radius

5 Mile Radius

10 Minute Drive

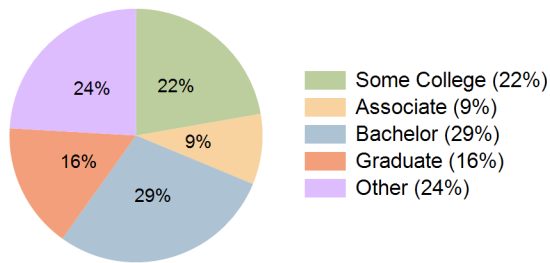
Current Year Demographics

Current Population	6,043	48,217	116,663	66,977
Total Daytime Pop	13,891	50,930	129,121	95,013
Workplace Pop	9,372	31,801	72,101	61,658
Average Household Income	\$97,487	\$99,404	\$94,831	\$87,179
Median Household Income	\$74,511	\$78,807	\$75,392	\$67,695
Total Households	2,463	18,531	45,372	27,607
Median Home Value	\$289,632	\$336,092	\$343,736	\$302,786
Bachelors Degree	31.3%	30.7%	29.8%	28.6%
Graduate Degree	15.5%	17.7%	16.0%	16.0%
Total Consumer Spending/Capita (Weekly)	\$321	\$325	\$323	\$317

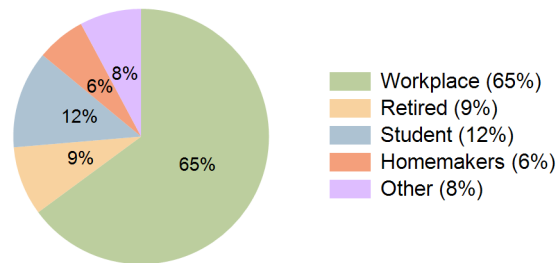
2023 Demographic Projections

Projected Population	7,244	56,781	132,220	75,680
Projected 5 Year Annual Growth Rate (Pop)	3.7%	3.3%	2.5%	2.5%
Projected Households	2,969	21,924	51,265	31,187
Projected 5 Year Annual Growth Rate (HH)	3.8%	3.4%	2.5%	2.5%

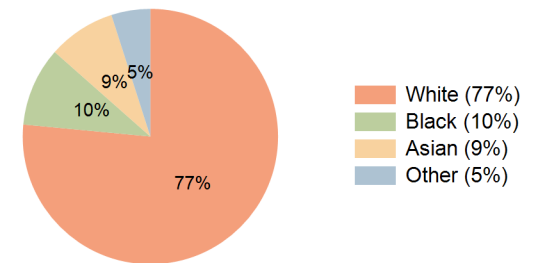
Education (10 Minute Drive)



Daytime Population (10 Minute Drive)



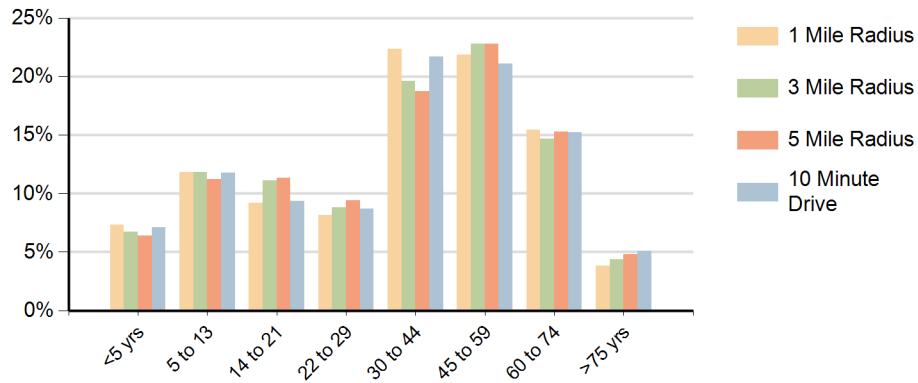
Race (10 Minute Drive)



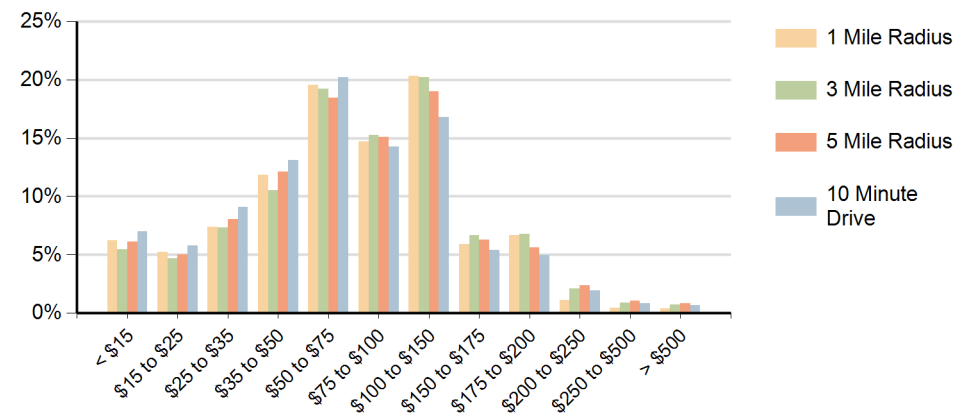
Hispanic Ethnicity

9% Hispanic | 91% Non Hispanic

Population by Age Range



Households by Income Range (\$000)



Shoppes at Bartram Park Jacksonville, Florida		1 Mile Radius	3 Mile Radius	5 Mile Radius	10 Minute Drive
Population	Current Estimated Population	6,043	48,217	116,663	66,977
	2010 Census Population	4,376	35,733	93,136	53,784
	2000 Census Population	2,503	18,469	66,286	39,846
	Historical Annual Growth 2000 to 2010	5.7%	6.8%	3.5%	3.0%
	Estimated Annual Growth 2010 to 2018	4.0%	3.7%	2.8%	2.7%
	Projected Annual Growth 2018 to 2023	3.7%	3.3%	2.5%	2.5%
Households	Current Estimated Households	2,463	18,531	45,372	27,607
	2010 Census Households	1,756	13,565	36,419	22,197
	2000 Census Households	856	6,375	25,891	16,297
	Historical Annual Growth 2000 to 2010	7.4%	7.8%	3.5%	3.1%
	Estimated Annual Growth 2010 to 2018	4.2%	3.9%	2.7%	2.7%
	Projected Annual Growth 2018 to 2023	3.8%	3.4%	2.5%	2.5%
	Population per Household	2.5	2.6	2.6	2.4
Ethnic	Hispanic or Latino Population	8%	8%	8%	9%
	Non Hispanic or Latino Population	92%	92%	92%	91%
Race	White	80.4%	78.8%	80.3%	76.5%
	Black or African American	8.1%	8.4%	8.1%	10.0%
	Asian & Pacific Islander	7.2%	8.2%	7.1%	8.5%
	Other Races	4.3%	4.5%	4.6%	4.9%