

Prestonbrook Crossing
Frisco, Texas

1 Mile Radius

3 Mile Radius

5 Mile Radius

10 Minute Drive

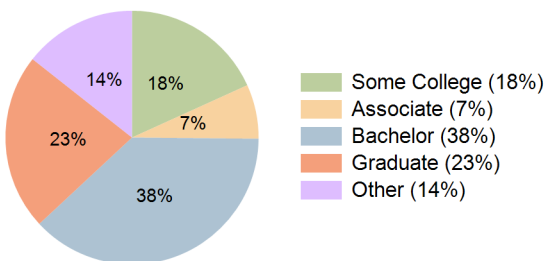
Current Year Demographics

| | | | | |
|---|-----------|-----------|-----------|-----------|
| Current Population | 22,664 | 99,673 | 287,744 | 134,152 |
| Total Daytime Pop | 20,891 | 110,562 | 319,056 | 160,809 |
| Workplace Pop | 8,677 | 50,817 | 149,776 | 83,174 |
| Average Household Income | \$109,645 | \$139,428 | \$151,633 | \$142,503 |
| Median Household Income | \$87,073 | \$111,765 | \$123,487 | \$115,557 |
| Total Households | 9,071 | 37,251 | 101,801 | 50,145 |
| Median Home Value | \$302,739 | \$400,940 | \$471,808 | \$433,443 |
| Bachelors Degree | 32.8% | 36.7% | 38.2% | 37.9% |
| Graduate Degree | 12.9% | 21.0% | 25.4% | 22.5% |
| Total Consumer Spending/Capita (Weekly) | \$388 | \$407 | \$414 | \$409 |

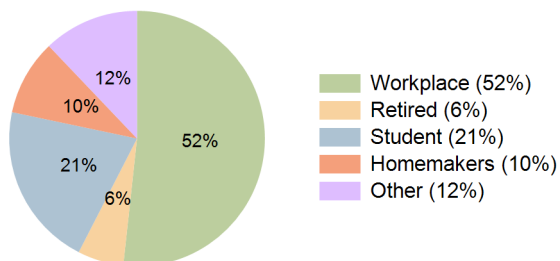
2026 Demographic Projections

| | | | | |
|---|--------|---------|---------|---------|
| Projected Population | 26,933 | 118,707 | 330,569 | 159,791 |
| Projected 5 Year Annual Growth Rate (Pop) | 3.5% | 3.6% | 2.8% | 3.6% |
| Projected Households | 10,816 | 44,705 | 117,189 | 59,957 |
| Projected 5 Year Annual Growth Rate (HH) | 3.6% | 3.7% | 2.9% | 3.6% |

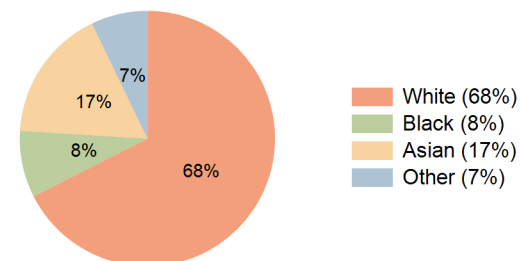
Education (10 Minute Drive)



Daytime Population (10 Minute Drive)



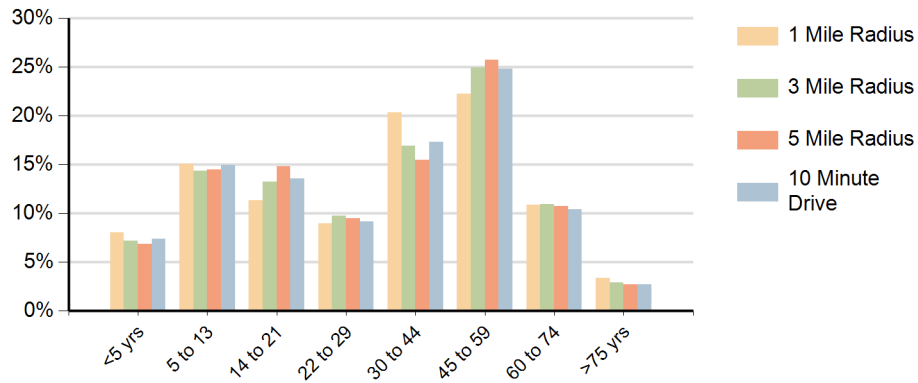
Race (10 Minute Drive)



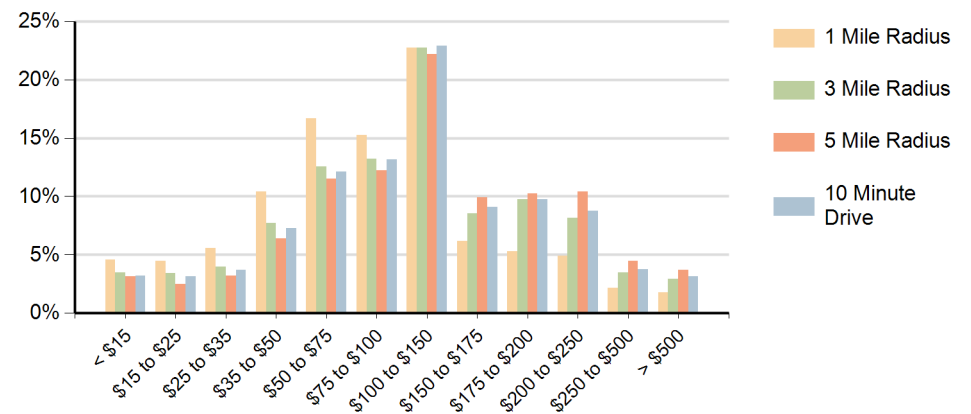
Hispanic Ethnicity

14% Hispanic | 86% Non Hispanic

Population by Age Range



Households by Income Range (\$000)



| Prestonbrook Crossing Frisco, Texas | | 1 Mile Radius | 3 Mile Radius | 5 Mile Radius | 10 Minute Drive |
|--|---------------------------------------|---------------|---------------|---------------|-----------------|
| Population | Current Estimated Population | 22,664 | 99,673 | 287,744 | 134,152 |
| | 2010 Census Population | 14,013 | 60,012 | 182,848 | 78,656 |
| | 2000 Census Population | 8,909 | 29,618 | 69,789 | 31,464 |
| | Historical Annual Growth 2000 to 2010 | 4.6% | 7.3% | 10.1% | 9.6% |
| | Estimated Annual Growth 2010 to 2021 | 4.4% | 4.6% | 4.1% | 4.9% |
| | Projected Annual Growth 2021 to 2026 | 3.5% | 3.6% | 2.8% | 3.6% |
| Households | Current Estimated Households | 9,071 | 37,251 | 101,801 | 50,145 |
| | 2010 Census Households | 5,545 | 21,857 | 64,198 | 28,934 |
| | 2000 Census Households | 3,291 | 10,470 | 24,535 | 11,280 |
| | Historical Annual Growth 2000 to 2010 | 5.4% | 7.6% | 10.1% | 9.9% |
| | Estimated Annual Growth 2010 to 2021 | 4.5% | 4.9% | 4.2% | 5.0% |
| | Projected Annual Growth 2021 to 2026 | 3.6% | 3.7% | 2.9% | 3.6% |
| | Population per Household | 2.5 | 2.7 | 2.8 | 2.7 |
| Ethnic | Hispanic or Latino Population | 23% | 15% | 11% | 14% |
| | Non Hispanic or Latino Population | 77% | 85% | 89% | 86% |
| Race | White | 70.1% | 70.4% | 65.5% | 67.5% |
| | Black or African American | 9.0% | 8.1% | 7.8% | 8.5% |
| | Asian & Pacific Islander | 9.6% | 13.9% | 20.4% | 16.8% |
| | Other Races | 11.3% | 7.6% | 6.3% | 7.2% |