

Hyde Park Plaza Cincinnati, Ohio	1 Mile Radius	3 Mile Radius	5 Mile Radius	10 Minute Drive
-------------------------------------	---------------	---------------	---------------	-----------------

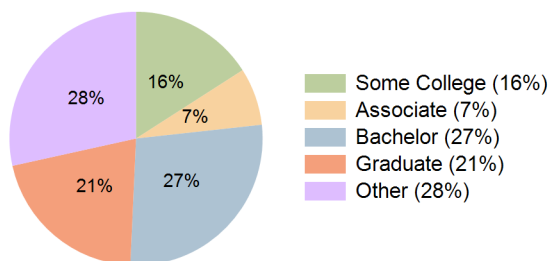
Current Year Demographics

Current Population	17,775	104,013	248,347	133,271
Total Daytime Pop	15,463	116,687	316,998	155,509
Workplace Pop	9,442	56,815	153,424	80,948
Average Household Income	\$129,445	\$103,286	\$94,233	\$98,205
Median Household Income	\$91,579	\$67,047	\$60,983	\$64,064
Total Households	9,750	48,369	112,785	61,602
Median Home Value	\$434,963	\$288,401	\$256,433	\$274,196
Bachelors Degree	42.0%	28.6%	26.9%	27.5%
Graduate Degree	34.4%	22.1%	19.4%	20.8%
Total Consumer Spending/Capita (Weekly)	\$365	\$351	\$348	\$350

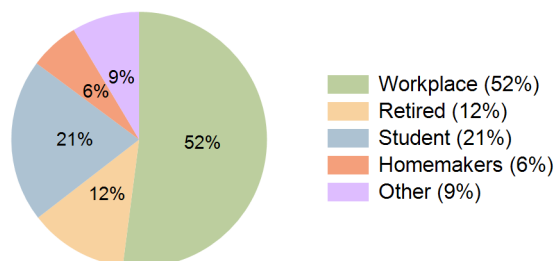
2027 Demographic Projections

Projected Population	17,970	103,846	247,760	132,778
Projected 5 Year Annual Growth Rate (Pop)	0.2%	0.0%	0.0%	-0.1%
Projected Households	9,877	48,365	112,714	61,442
Projected 5 Year Annual Growth Rate (HH)	0.3%	0.0%	0.0%	-0.1%

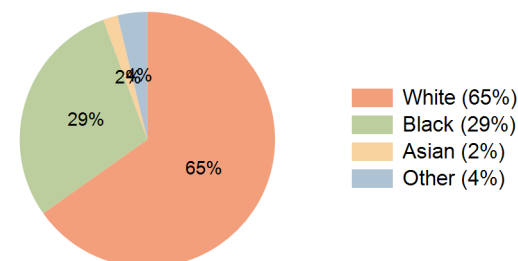
Education (10 Minute Drive)



Daytime Population (10 Minute Drive)

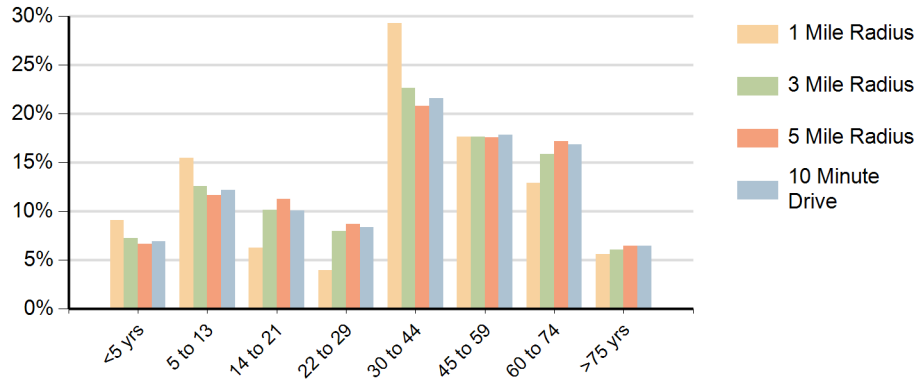


Race (10 Minute Drive)

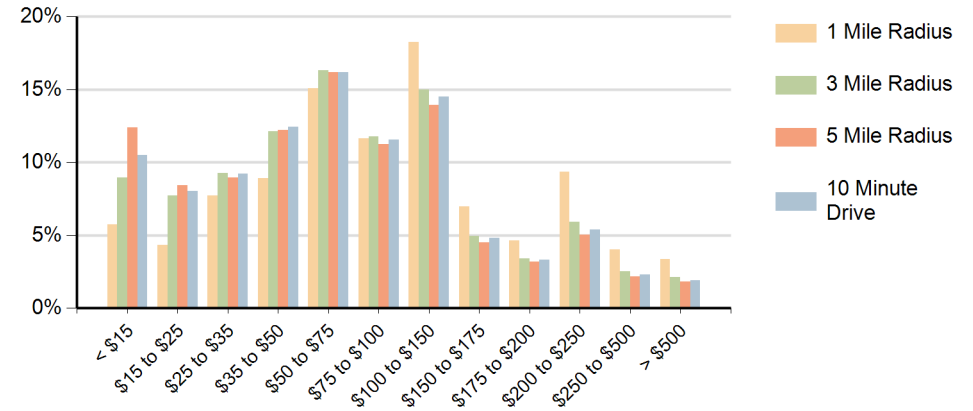


Hispanic Ethnicity
3% Hispanic | 97% Non Hispanic

Population by Age Range



Households by Income Range (\$000)



Hyde Park Plaza Cincinnati, Ohio		1 Mile Radius	3 Mile Radius	5 Mile Radius	10 Minute Drive
Population	Current Estimated Population	17,775	104,013	248,347	133,271
	2010 Census Population	16,581	99,763	238,350	129,007
	2000 Census Population	17,678	110,175	263,263	143,503
	Historical Annual Growth 2000 to 2010	-0.6%	-1.0%	-1.0%	-1.1%
	Estimated Annual Growth 2010 to 2022	0.6%	0.3%	0.3%	0.3%
	Projected Annual Growth 2022 to 2027	0.2%	0.0%	0.0%	-0.1%
Households	Current Estimated Households	9,750	48,369	112,785	61,602
	2010 Census Households	9,043	46,165	107,684	59,405
	2000 Census Households	9,463	49,533	116,575	64,479
	Historical Annual Growth 2000 to 2010	-0.5%	-0.7%	-0.8%	-0.8%
	Estimated Annual Growth 2010 to 2022	0.6%	0.4%	0.4%	0.3%
	Projected Annual Growth 2022 to 2027	0.3%	0.0%	0.0%	-0.1%
Population per Household		1.8	2.1	2.1	2.1
Ethnic	Hispanic or Latino Population	3%	3%	3%	3%
	Non Hispanic or Latino Population	97%	97%	97%	97%
Race	White	88.3%	68.7%	66.3%	65.2%
	Black or African American	6.0%	25.9%	27.7%	29.2%
	Asian & Pacific Islander	2.9%	1.8%	2.0%	1.9%
	Other Races	2.8%	3.7%	4.0%	3.8%